

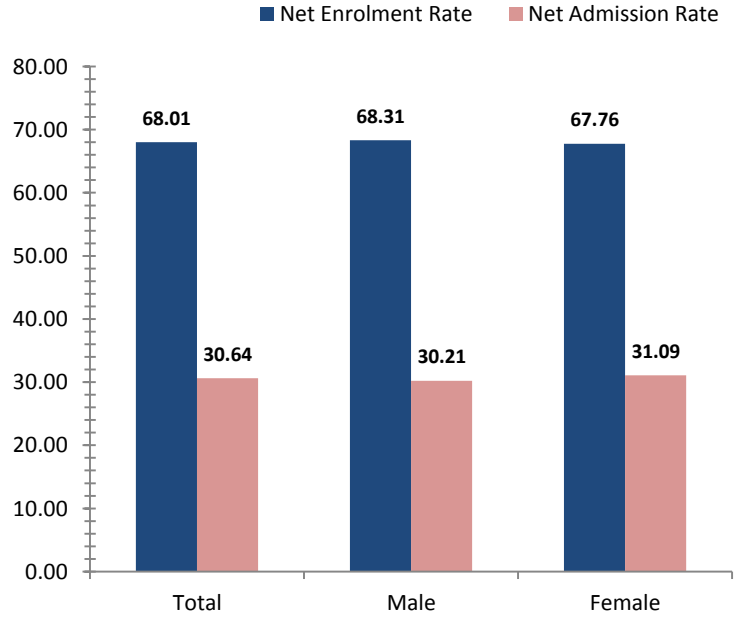


Western

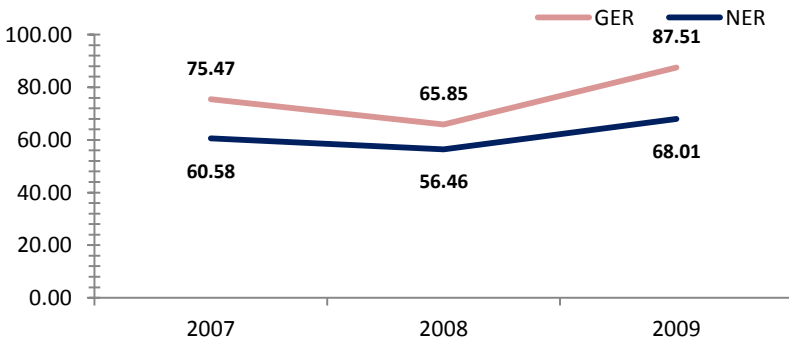
Access To Education

Rate, 2009	Province	National	Variance
Net admission rate	30.64	25.54	5.10
Gross enrolment rate (Prep to Grade 8)	87.51	85.52	1.99
Net enrolment rate (Prep to Grade 8)	68.01	69.47	-1.46

Snapshot of Progress, 2009



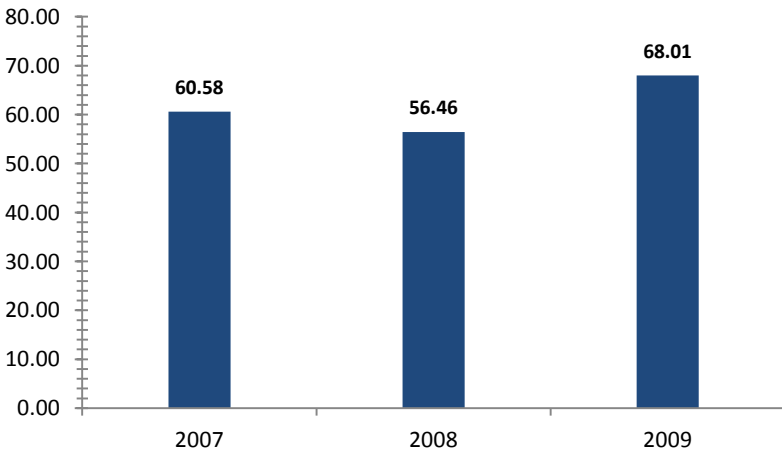
Provincial Enrolment Rate



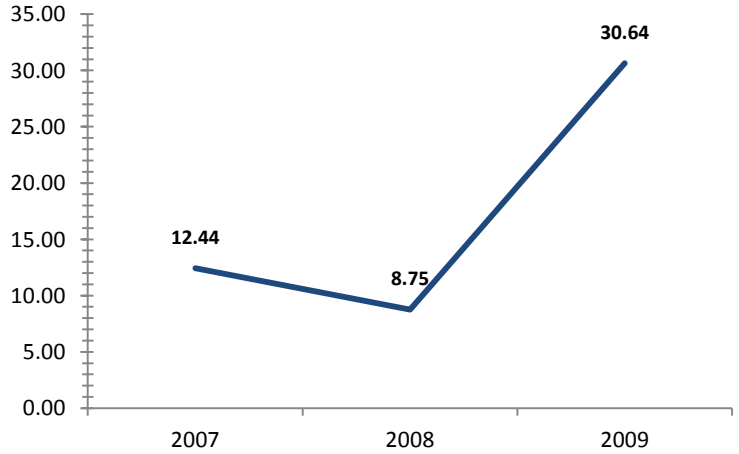
Source: Department of Education - Statistical Bulletin

Source: Department of Education - Statistical Bulletin

Net Enrolment Rate (Prep to Grade 8)



Net Admission Rate

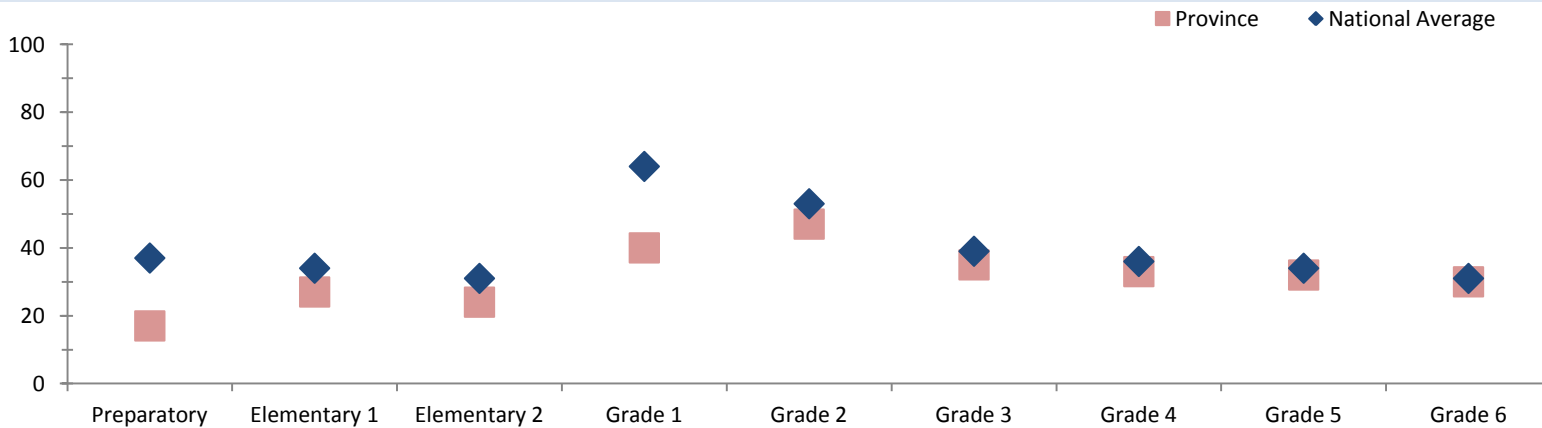


Source: Department of Education - Statistical Bulletin

Source: Department of Education - Statistical Bulletin

Quality Education

Student Teacher Ratio, 2008



Source: Department of Education - Statistical Bulletin

Western

Education

Indicators	Male			Change	Female			Change	Total			Change
	2007	2008	2009	2007-2009	2007	2008	2009	2007-2009	2007	2008	2009	2007-2009
Teachers (#)												
Teachers preparatory	129	223	178	+49	60	91	65	+5	190	314	243	+53
Teachers elementary 1	108	106	138	+30	46	47	67	+21	155	153	206	+51
Teachers elementary 2	201	128	140	-61	52	32	70	+18	254	160	210	-44
Teachers grade 1	2	3	2	0	0	0	0	0	2	3	2	0
Teachers grade 2	0	4	0	0	0	0	1	+1	0	4	1	+1
Teachers grade 3	53	81	66	+13	47	40	52	+5	100	122	118	+18
Teachers grade 4	49	76	75	+26	41	40	39	-2	90	116	115	+25
Teachers grade 5	56	68	64	+8	36	38	41	+5	92	107	106	+14
Teachers grade 6	66	62	73	+7	31	39	33	+2	97	102	107	+10
Teachers grade 7/8	122	95	130	+8	52	74	59	+7	174	169	190	+16
Students (#)												
Students preparatory	2966	2751	3960	+994	2744	2593	3744	+1000	5710	5344	7704	+1994
Students elementary 1	2507	2150	3156	+649	2332	2012	2985	+653	4839	4162	6142	+1303
Students elementary 2	2415	2083	3006	+591	2250	1913	2783	+533	4665	3996	5791	+1126
Students grade 1	87	71	72	-15	71	73	64	-7	158	144	136	-22
Students grade 2	125	123	48	-77	106	112	41	-65	231	235	89	-142
Students grade 3	1760	2244	2482	+722	1639	2037	2200	+561	3399	4281	4682	+1283
Students grade 4	1688	2099	2500	+812	1386	1864	2123	+737	3074	3963	4623	+1549
Students grade 5	1606	1909	2184	+578	1340	1594	1892	+552	2946	3503	4076	+1130
Students grade 6	1611	1773	2055	+444	1379	1382	1695	+316	2990	3155	3750	+760
Students grade 7	1323	1557	1825	+502	1057	1256	1412	+355	2380	2813	3237	+857
Students grade 8	1284	1511	1737	+453	984	1108	1302	+318	2268	2619	3039	+771
Students grade 9	724	635	1012	+288	516	425	667	+151	1240	1060	1679	+439
Students grade 10	733	537	813	+80	404	396	582	+178	1137	933	1395	+258
Students grade 11	111	221	277	+166	56	100	150	+94	167	321	427	+260
Students grade 12	83	165	258	+175	28	88	110	+82	111	253	369	+258
Schools (#)												
Elementary schools									444	448	455	+11
Primary schools									206	204	209	+3
National high schools									0	0	0	0
Secondary schools									7	7	9	+2
Technical colleges									0	0	0	0
Vocational schools									4	1	5	+1

Source: Department of Education - Statistical Bulletin