

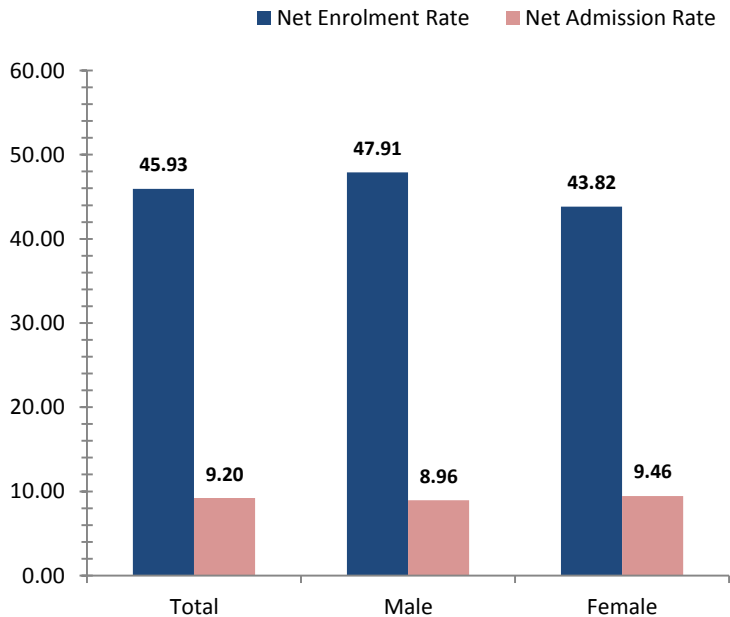


West Sepik

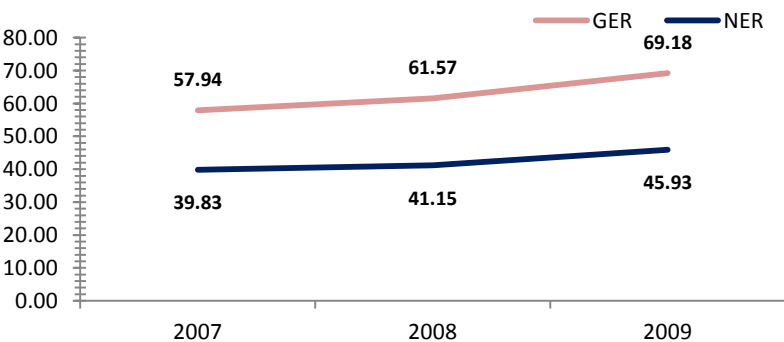
Access To Education

Rate, 2009	Province	National	Variance
Net admission rate	9.20	25.54	-16.34
Gross enrolment rate (Prep to Grade 8)	69.18	85.52	-16.34
Net enrolment rate (Prep to Grade 8)	45.93	69.47	-23.54

Snapshot of Progress, 2009



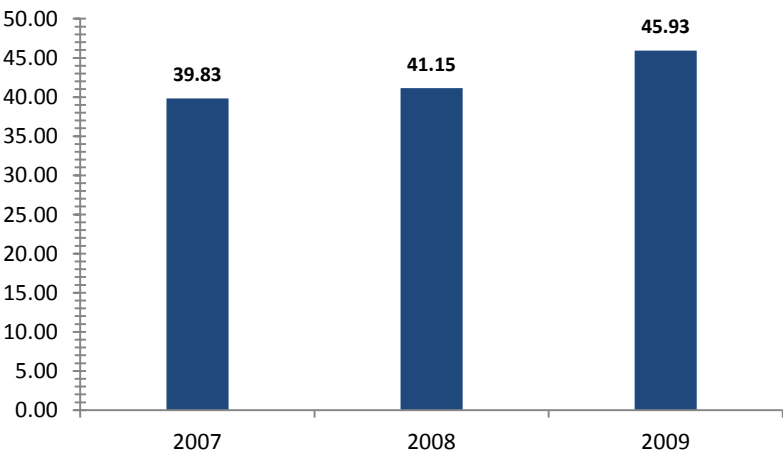
Provincial Enrolment Rate



Source: Department of Education - Statistical Bulletin

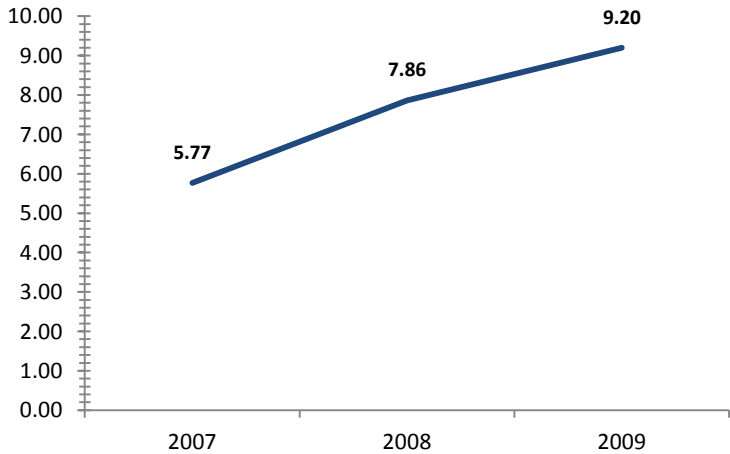
Source: Department of Education - Statistical Bulletin

Net Enrolment Rate (Prep to Grade 8)



Source: Department of Education - Statistical Bulletin

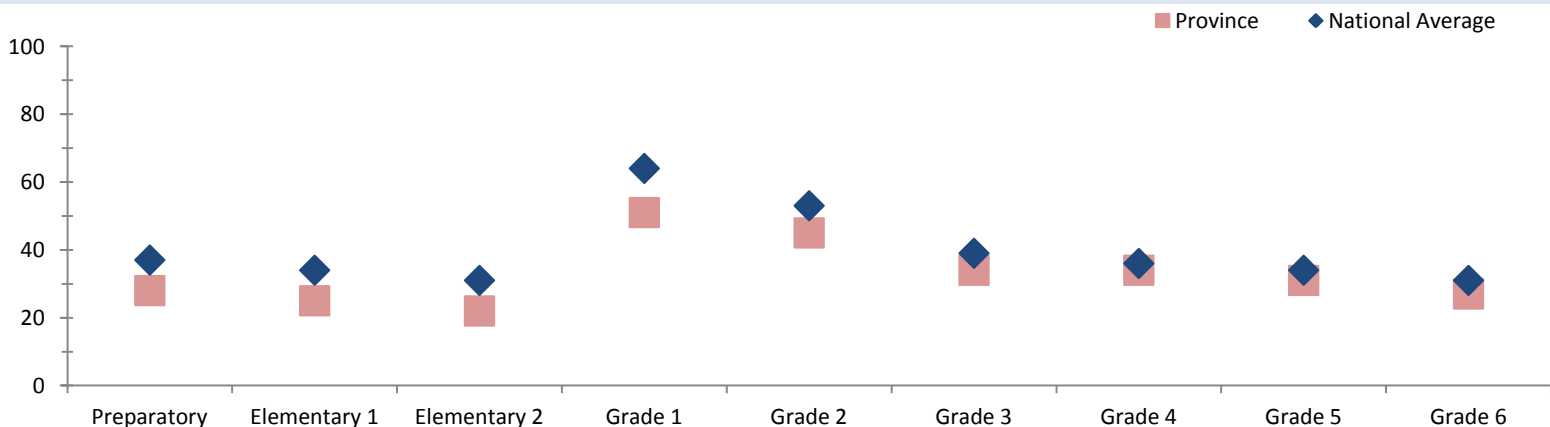
Net Admission Rate



Source: Department of Education - Statistical Bulletin

Quality Education

Student Teacher Ratio, 2008



Source: Department of Education - Statistical Bulletin

West Sepik

Education

Indicators	Male			Change	Female			Change	Total			Change
	2007	2008	2009	2007-2009	2007	2008	2009	2007-2009	2007	2008	2009	2007-2009
Teachers (#)												
Teachers preparatory	76	123	132	+56	38	53	33	-5	114	176	165	+51
Teachers elementary 1	73	75	66	-7	24	37	37	+13	97	112	104	+7
Teachers elementary 2	73	67	54	-19	41	31	26	-15	114	98	80	-34
Teachers grade 1	57	34	41	-16	23	19	23	0	80	53	64	-16
Teachers grade 2	53	31	28	-25	21	24	22	+1	74	56	50	-24
Teachers grade 3	69	61	60	-9	54	51	41	-13	123	113	101	-22
Teachers grade 4	81	65	58	-23	43	43	38	-5	124	108	97	-27
Teachers grade 5	64	63	56	-8	44	44	34	-10	108	107	90	-18
Teachers grade 6	72	62	66	-6	41	37	32	-9	114	99	99	-15
Teachers grade 7/8	107	115	138	+31	74	82	85	+11	181	197	223	+42
Students (#)												
Students preparatory	1883	2627	2453	+570	1643	2301	2149	+506	3526	4928	4602	+1076
Students elementary 1	1350	1490	1491	+141	1116	1334	1236	+120	2466	2824	2727	+261
Students elementary 2	1310	1236	884	-426	1029	988	704	-325	2339	2224	1588	-751
Students grade 1	2283	1581	2188	-95	1727	1168	1362	-365	4010	2749	3550	-460
Students grade 2	1842	1474	1713	-129	1400	1079	1018	-382	3242	2553	2731	-511
Students grade 3	2656	2194	2806	+150	1902	1728	2190	+288	4558	3922	4996	+438
Students grade 4	2460	2172	2676	+216	1888	1585	1670	-218	4348	3757	4346	-2
Students grade 5	2023	1935	2290	+267	1523	1486	1684	+161	3546	3421	3974	+428
Students grade 6	1931	1561	2217	+286	1437	1159	1729	+292	3368	2720	3946	+578
Students grade 7	1856	1748	1808	-48	1252	1238	1252	0	3108	2986	3060	-48
Students grade 8	1111	1419	1427	+316	780	953	967	+187	1891	2372	2395	+504
Students grade 9	443	602	842	+399	323	422	597	+274	766	1024	1439	+673
Students grade 10	443	466	605	+162	309	295	442	+133	752	761	1048	+296
Students grade 11	81	229	284	+203	70	62	186	+116	151	291	470	+319
Students grade 12	94	192	278	+184	52	69	122	+70	146	261	400	+254
Schools (#)												
Elementary schools									194	340	184	-10
Primary schools									199	203	208	+9
National high schools									0	0	0	0
Secondary schools									10	12	10	0
Technical colleges									0	0	0	0
Vocational schools									18	8	16	-2

Source: Department of Education - Statistical Bulletin