

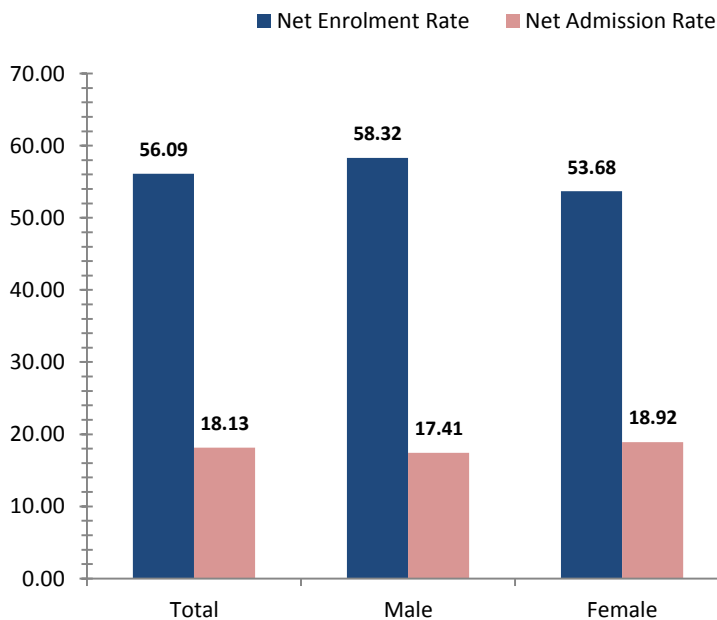


Morobe

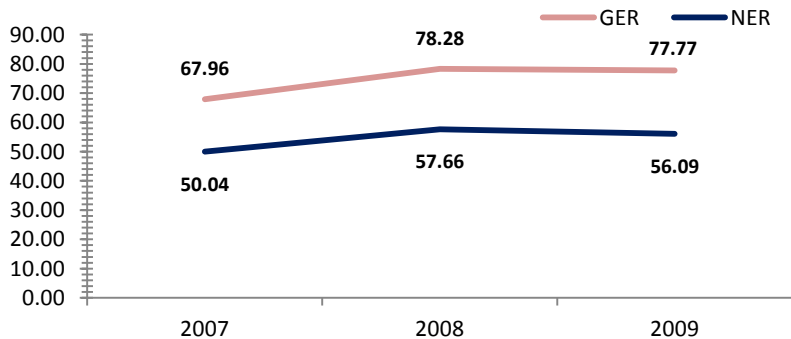
Access To Education

Rate, 2009	Province	National	Variance
Net admission rate	18.13	25.54	-7.41
Gross enrolment rate (Prep to Grade 8)	77.77	85.52	-7.75
Net enrolment rate (Prep to Grade 8)	56.09	69.47	-13.38

Snapshot of Progress, 2009



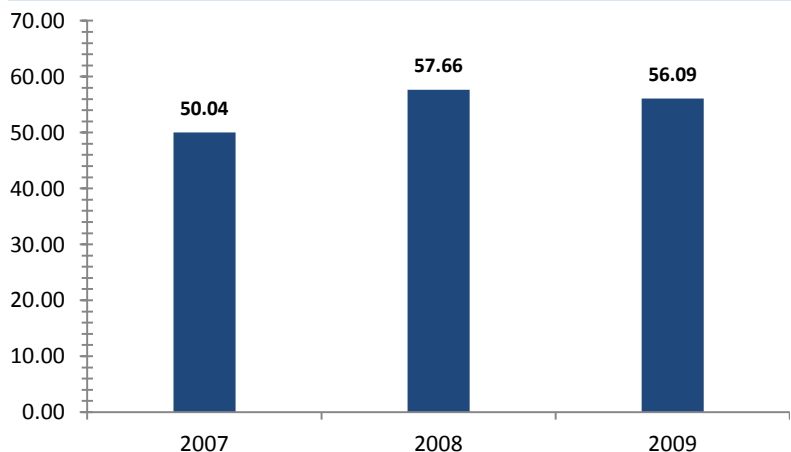
Provincial Enrolment Rate



Source: Department of Education - Statistical Bulletin

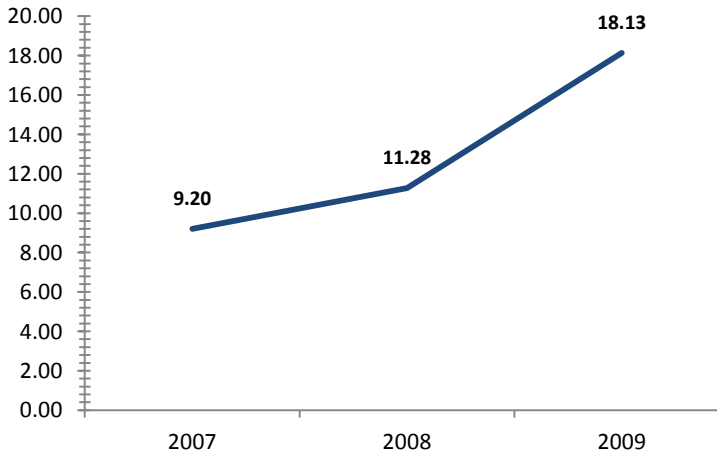
Source: Department of Education - Statistical Bulletin

Net Enrolment Rate (Prep to Grade 8)



Source: Department of Education - Statistical Bulletin

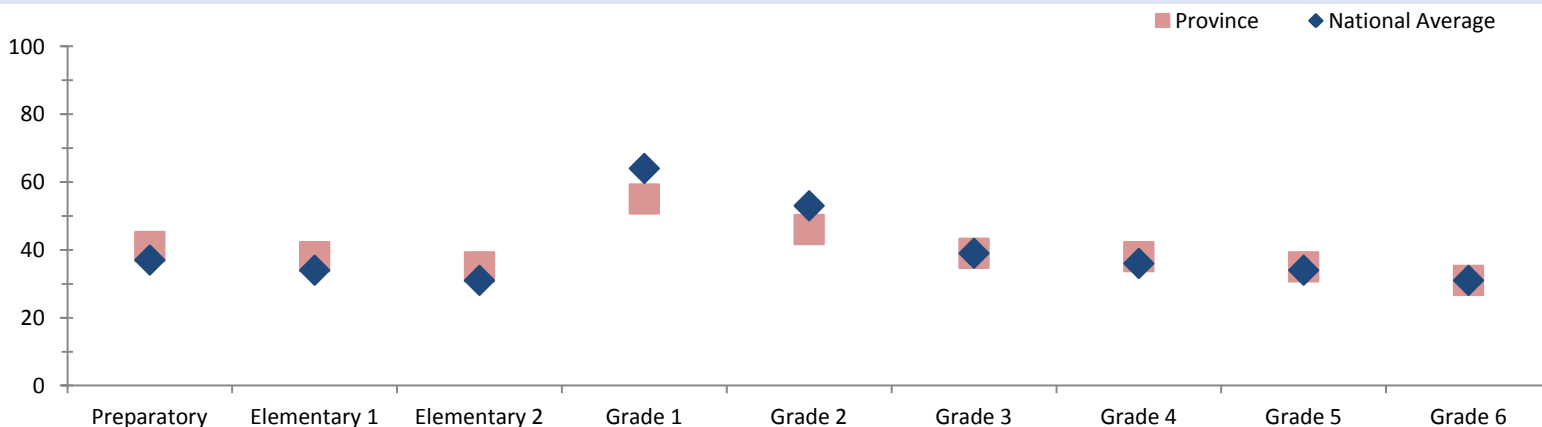
Net Admission Rate



Source: Department of Education - Statistical Bulletin

Quality Education

Student Teacher Ratio, 2008



Source: Department of Education - Statistical Bulletin



Morobe

Education

Indicators	Male			Change	Female			Change	Total			Change
	2007	2008	2009	2007-2009	2007	2008	2009	2007-2009	2007	2008	2009	2007-2009
Teachers (#)												
Teachers preparatory	153	287	244	+91	99	125	172	+73	253	412	417	+164
Teachers elementary 1	127	168	200	+73	85	164	142	+57	212	332	343	+131
Teachers elementary 2	128	123	179	+51	87	143	125	+38	215	266	305	+90
Teachers grade 1	76	55	38	-38	48	37	29	-19	124	93	68	-56
Teachers grade 2	91	83	77	-14	44	56	34	-10	135	139	111	-24
Teachers grade 3	192	182	164	-28	224	195	177	-47	417	378	341	-76
Teachers grade 4	153	186	174	+21	156	164	153	-3	309	351	328	+19
Teachers grade 5	172	177	169	-3	124	151	125	+1	296	328	295	-1
Teachers grade 6	173	189	159	-14	128	143	123	-5	301	332	282	-19
Teachers grade 7/8	341	420	363	+22	216	226	183	-33	557	646	546	-11
Students (#)												
Students preparatory	6145	9016	10790	+4645	5697	8043	9504	+3807	11842	17059	20294	+8452
Students elementary 1	4442	6871	8013	+3571	3858	5871	7026	+3168	8300	12742	15040	+6740
Students elementary 2	3994	5123	6543	+2549	3287	4309	5472	+2185	7281	9432	12015	+4734
Students grade 1	3723	2788	2225	-1498	3169	2398	1784	-1385	6892	5186	4009	-2883
Students grade 2	3597	3611	2959	-638	2837	2896	2340	-497	6434	6507	5299	-1135
Students grade 3	7251	8266	7955	+704	5728	6628	6098	+370	12979	14894	14053	+1074
Students grade 4	6454	7460	7735	+1281	5041	5905	5431	+390	11495	13365	13166	+1671
Students grade 5	5874	6500	6628	+754	4533	4989	5203	+670	10407	11489	11831	+1424
Students grade 6	5462	5993	5884	+422	4142	4367	4469	+327	9604	10360	10353	+749
Students grade 7	4842	5446	5404	+562	3522	3931	3969	+447	8364	9377	9373	+1009
Students grade 8	4176	4854	4966	+790	2843	3463	3550	+707	7019	8317	8516	+1497
Students grade 9	2200	2543	2940	+740	1500	1703	2049	+549	3700	4246	4989	+1289
Students grade 10	1922	2200	2635	+713	1405	1448	1472	+67	3327	3648	4108	+781
Students grade 11	1012	1001	1114	+102	671	633	622	-49	1683	1634	1736	+53
Students grade 12	703	904	893	+190	509	524	569	+60	1212	1428	1462	+250
Schools (#)												
Elementary schools									369	482	519	+150
Primary schools									313	313	321	+8
National high schools									1	1	1	0
Secondary schools									18	18	18	0
Technical colleges									0	1	1	+1
Vocational schools									9	7	9	0

Source: Department of Education - Statistical Bulletin