

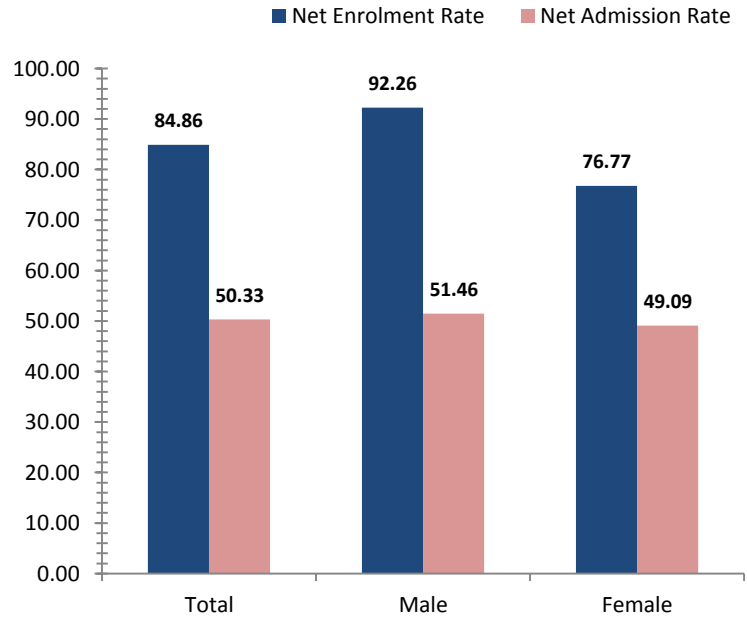


# Enga

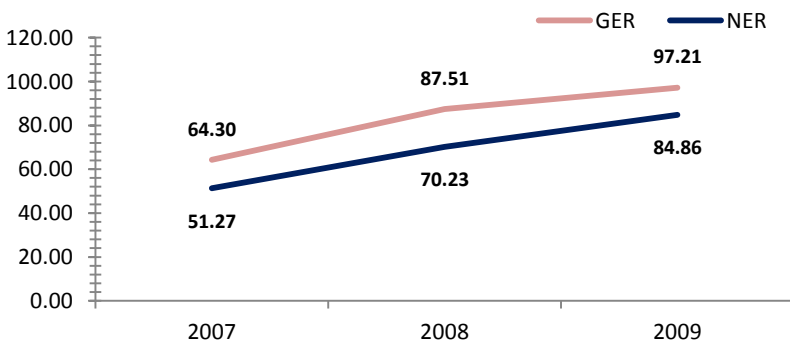
## Access To Education

Rate, 2009	Province	National	Variance
Net admission rate	50.33	25.54	24.79
Gross enrolment rate (Prep to Grade 8)	97.21	85.52	11.69
Net enrolment rate (Prep to Grade 8)	84.86	69.47	15.39

### Snapshot of Progress, 2009



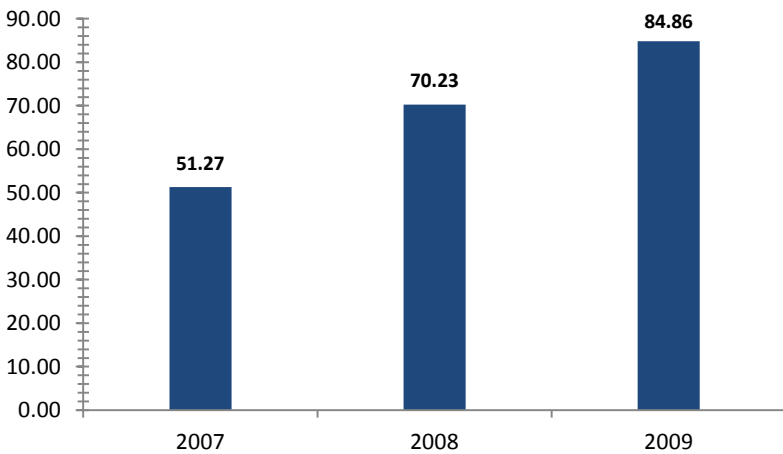
### Provincial Enrolment Rate



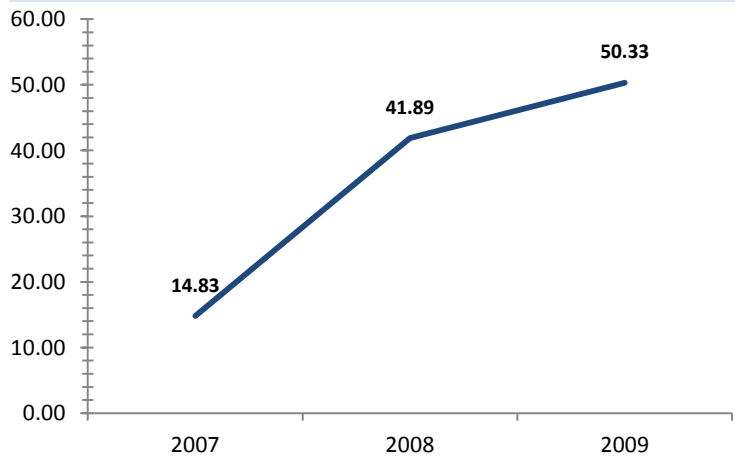
Source: Department of Education - Statistical Bulletin

Source: Department of Education - Statistical Bulletin

### Net Enrolment Rate (Prep to Grade 8)



### Net Admission Rate

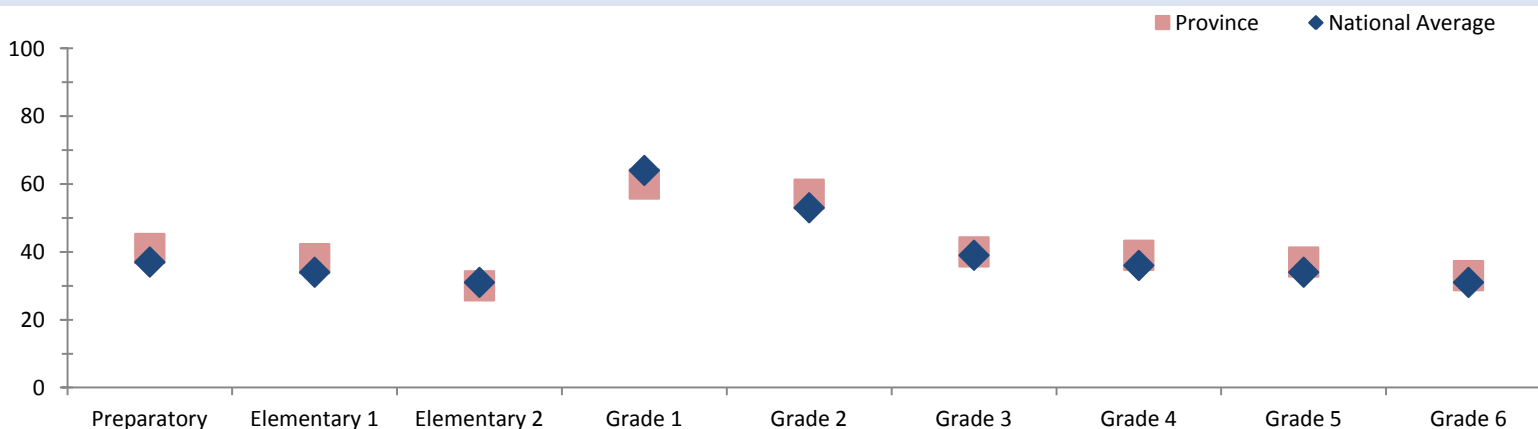


Source: Department of Education - Statistical Bulletin

Source: Department of Education - Statistical Bulletin

## Quality Education

### Student Teacher Ratio, 2008



Source: Department of Education - Statistical Bulletin



# Enga

## Education

Indicators	Male			Change	Female			Change	Total			Change
	2007	2008	2009	2007-2009	2007	2008	2009	2007-2009	2007	2008	2009	2007-2009
<b>Teachers (#)</b>												
Teachers preparatory	92	163	173	<b>+81</b>	84	135	160	<b>+76</b>	177	298	334	<b>+157</b>
Teachers elementary 1	82	136	144	<b>+62</b>	68	102	138	<b>+70</b>	151	238	283	<b>+132</b>
Teachers elementary 2	95	139	158	<b>+63</b>	44	75	97	<b>+53</b>	140	214	256	<b>+116</b>
Teachers grade 1	28	37	26	<b>-2</b>	7	10	8	<b>+1</b>	36	48	34	<b>-2</b>
Teachers grade 2	27	32	31	<b>+4</b>	5	7	7	<b>+2</b>	32	39	39	<b>+7</b>
Teachers grade 3	81	108	111	<b>+30</b>	28	59	56	<b>+28</b>	109	167	167	<b>+58</b>
Teachers grade 4	65	106	98	<b>+33</b>	36	46	58	<b>+22</b>	101	153	156	<b>+55</b>
Teachers grade 5	65	94	94	<b>+29</b>	23	44	47	<b>+24</b>	88	138	142	<b>+54</b>
Teachers grade 6	68	93	86	<b>+18</b>	20	44	58	<b>+38</b>	89	137	145	<b>+56</b>
Teachers grade 7/8	131	204	200	<b>+69</b>	45	67	69	<b>+24</b>	176	271	269	<b>+93</b>
<b>Students (#)</b>												
Students preparatory	3642	6781	7700	<b>+4058</b>	2875	5586	6349	<b>+3474</b>	6517	12367	14049	<b>+7532</b>
Students elementary 1	2942	5085	5901	<b>+2959</b>	2258	4046	4873	<b>+2615</b>	5200	9131	10774	<b>+5574</b>
Students elementary 2	2522	3846	5070	<b>+2548</b>	1989	2779	3985	<b>+1996</b>	4511	6625	9055	<b>+4544</b>
Students grade 1	1172	1723	1565	<b>+393</b>	740	1203	1161	<b>+421</b>	1912	2926	2726	<b>+814</b>
Students grade 2	902	1406	1387	<b>+485</b>	558	894	980	<b>+422</b>	1460	2300	2367	<b>+907</b>
Students grade 3	2520	4075	4251	<b>+1731</b>	1694	2665	2964	<b>+1270</b>	4214	6740	7215	<b>+3001</b>
Students grade 4	2286	3764	3888	<b>+1602</b>	1377	2369	2581	<b>+1204</b>	3663	6133	6469	<b>+2806</b>
Students grade 5	1928	3225	3406	<b>+1478</b>	1216	1907	2178	<b>+962</b>	3144	5132	5584	<b>+2440</b>
Students grade 6	1764	2893	3109	<b>+1345</b>	1035	1721	1940	<b>+905</b>	2799	4614	5049	<b>+2250</b>
Students grade 7	1474	2200	2320	<b>+846</b>	848	1276	1416	<b>+568</b>	2322	3476	3736	<b>+1414</b>
Students grade 8	1358	1946	2134	<b>+776</b>	686	1089	1233	<b>+547</b>	2044	3035	3367	<b>+1323</b>
Students grade 9	1336	1056	1132	<b>-204</b>	620	615	640	<b>+20</b>	1956	1671	1772	<b>-184</b>
Students grade 10	1165	1067	1054	<b>-111</b>	516	464	478	<b>-38</b>	1681	1531	1532	<b>-149</b>
Students grade 11	442	497	410	<b>-32</b>	154	200	146	<b>-8</b>	596	697	556	<b>-40</b>
Students grade 12	383	442	479	<b>+96</b>	166	139	169	<b>+3</b>	549	581	648	<b>+99</b>
<b>Schools (#)</b>												
Elementary schools								186	288	300	<b>+114</b>	
Primary schools								141	145	141	<b>0</b>	
National high schools								0	0	0	<b>0</b>	
Secondary schools								8	10	8	<b>0</b>	
Technical colleges								0	0	0	<b>0</b>	
Vocational schools								12	5	13	<b>+1</b>	

Source: Department of Education - Statistical Bulletin