

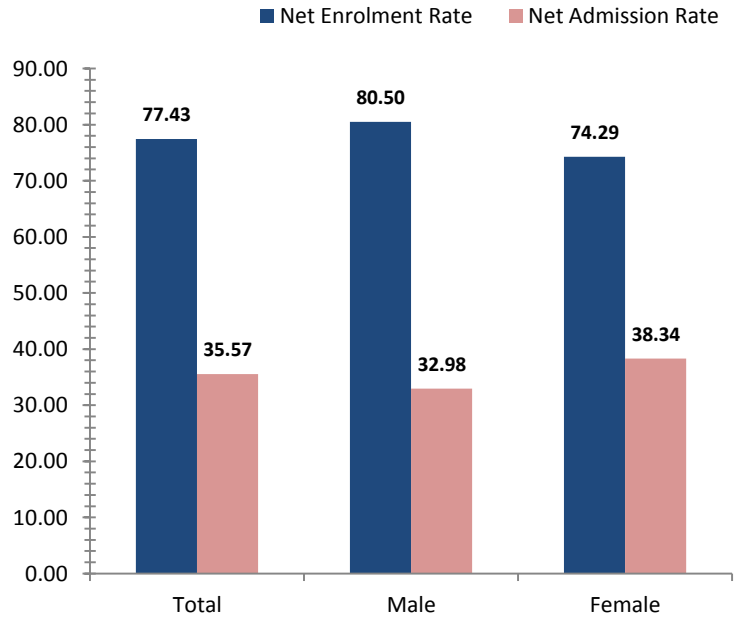


# Western Highlands

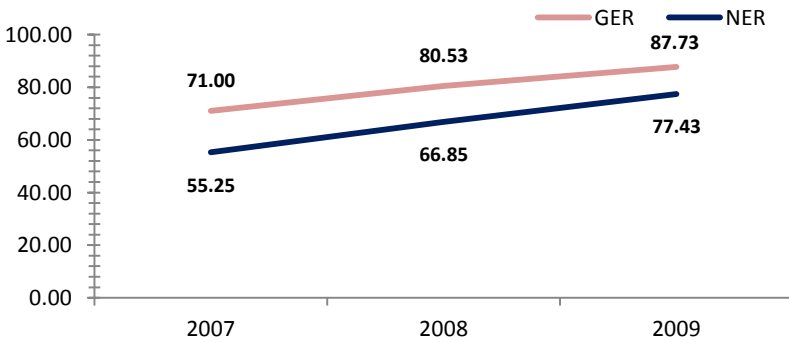
## Access To Education

Rate, 2009	Province	National	Variance
Net admission rate	35.57	25.54	10.03
Gross enrolment rate (Prep to Grade 8)	87.73	85.52	2.21
Net enrolment rate (Prep to Grade 8)	77.43	69.47	7.96

### Snapshot of Progress, 2009



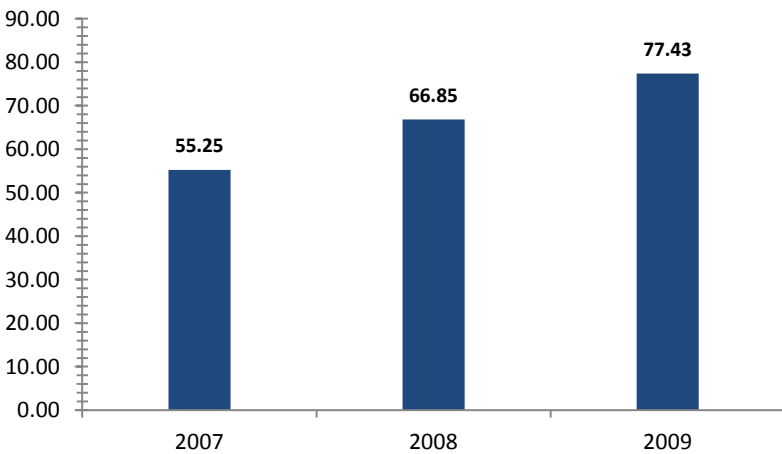
### Provincial Enrolment Rate



Source: Department of Education - Statistical Bulletin

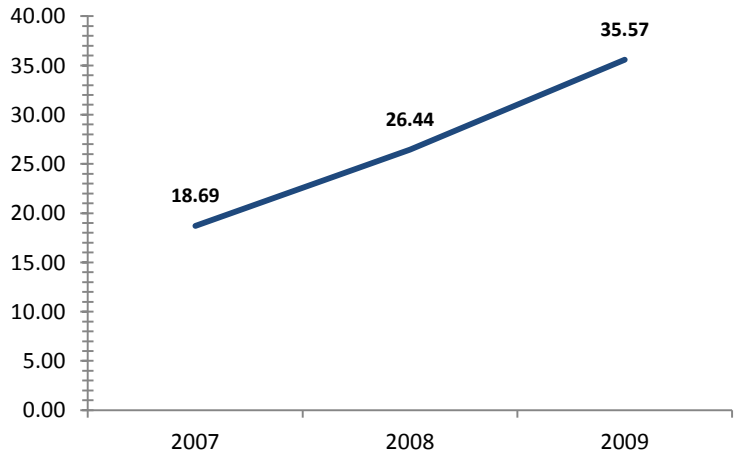
Source: Department of Education - Statistical Bulletin

### Net Enrolment Rate (Prep to Grade 8)



Source: Department of Education - Statistical Bulletin

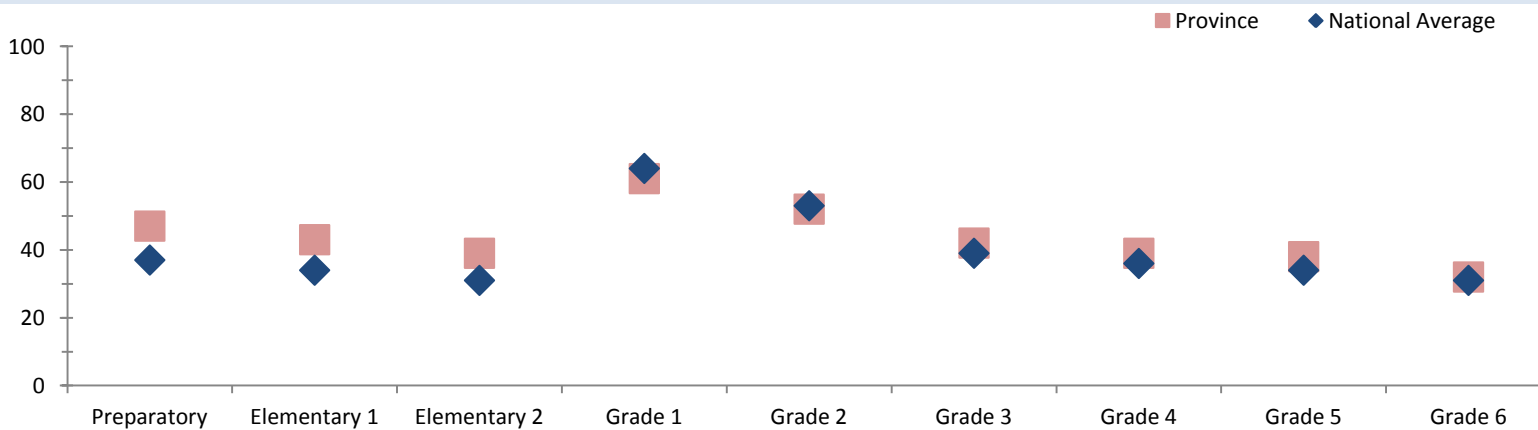
### Net Admission Rate



Source: Department of Education - Statistical Bulletin

## Quality Education

### Student Teacher Ratio, 2008



Source: Department of Education - Statistical Bulletin

# Western Highlands

## Education

Indicators	Male			Change	Female			Change	Total			Change
	2007	2008	2009	2007-2009	2007	2008	2009	2007-2009	2007	2008	2009	2007-2009
<b>Teachers (#)</b>												
Teachers preparatory	139	178	165	+26	110	132	133	+23	250	310	299	+49
Teachers elementary 1	121	134	146	+25	93	125	135	+42	215	259	282	+67
Teachers elementary 2	131	136	149	+18	71	100	101	+30	203	236	251	+48
Teachers grade 1	76	71	68	-8	27	30	22	-5	104	101	91	-13
Teachers grade 2	69	75	75	+6	33	27	27	-6	102	103	102	0
Teachers grade 3	139	138	143	+4	116	127	131	+15	255	266	274	+19
Teachers grade 4	136	124	138	+2	104	121	134	+30	240	245	273	+33
Teachers grade 5	138	129	140	+2	90	98	119	+29	229	228	259	+30
Teachers grade 6	127	130	139	+12	82	96	114	+32	209	226	254	+45
Teachers grade 7/8	276	317	347	+71	151	170	196	+45	427	487	544	+117
<b>Students (#)</b>												
Students preparatory	6444	7596	7990	+1546	5814	7084	7701	+1887	12258	14680	15691	+3433
Students elementary 1	4794	5974	7019	+2225	4414	5407	6480	+2066	9208	11381	13499	+4291
Students elementary 2	4338	4952	5786	+1448	3589	4256	5249	+1660	7927	9208	11035	+3108
Students grade 1	3587	3293	3345	-242	3128	2906	2873	-255	6715	6199	6218	-497
Students grade 2	3123	2960	3123	0	2506	2486	2580	+74	5629	5446	5703	+74
Students grade 3	5839	6384	6919	+1080	4831	5038	5653	+822	10670	11422	12572	+1902
Students grade 4	5499	5416	6350	+851	4050	4269	4899	+849	9549	9685	11249	+1700
Students grade 5	4927	5106	5747	+820	3690	3720	4462	+772	8617	8826	10209	+1592
Students grade 6	3975	4234	5089	+1114	3058	3132	3727	+669	7033	7366	8816	+1783
Students grade 7	3255	3512	3815	+560	2378	2560	2898	+520	5633	6072	6713	+1080
Students grade 8	2642	2948	3542	+900	2005	2230	2580	+575	4647	5178	6122	+1475
Students grade 9	2160	1756	2783	+623	1402	1103	1731	+329	3562	2859	4514	+952
Students grade 10	1942	1499	2356	+414	1067	915	1467	+400	3009	2414	3823	+814
Students grade 11	583	491	741	+158	358	359	454	+96	941	850	1195	+254
Students grade 12	620	419	489	-131	365	300	299	-66	985	719	788	-197
<b>Schools (#)</b>												
Elementary schools									250	280	286	+36
Primary schools									186	190	168	-18
National high schools									0	0	0	0
Secondary schools									13	15	15	+2
Technical colleges									0	1	1	+1
Vocational schools									8	5	10	+2

Source: Department of Education - Statistical Bulletin