

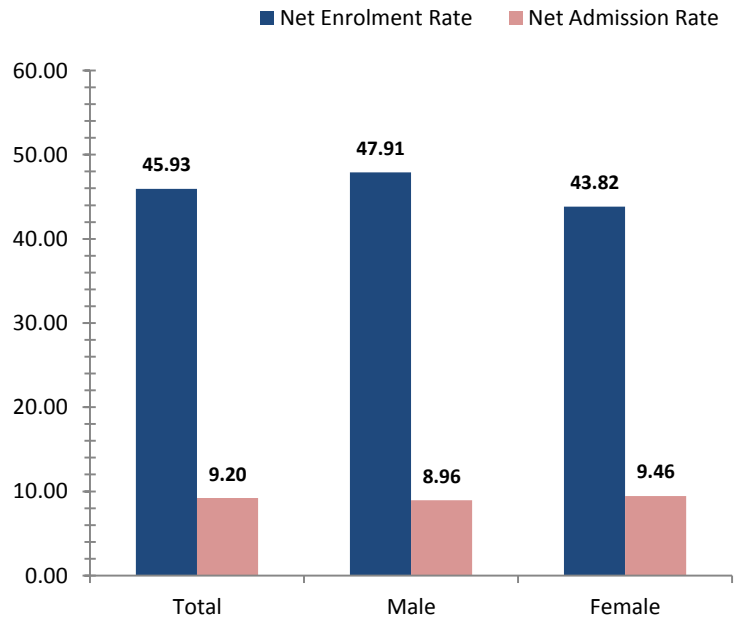


# West Sepik

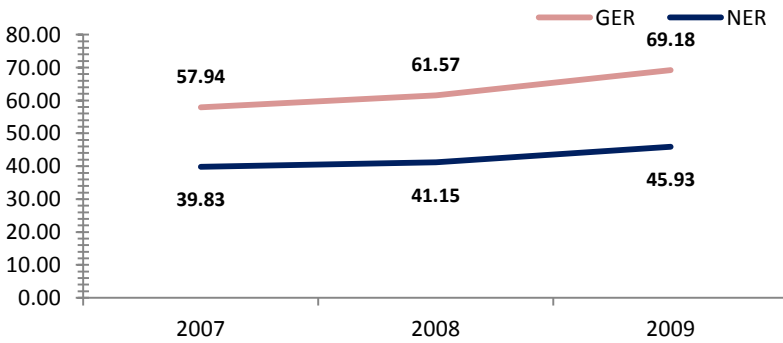
## Access To Education

Rate, 2009	Province	National	Variance
Net admission rate	9.20	25.54	-16.34
Gross enrolment rate (Prep to Grade 8)	69.18	85.52	-16.34
Net enrolment rate (Prep to Grade 8)	45.93	69.47	-23.54

### Snapshot of Progress, 2009



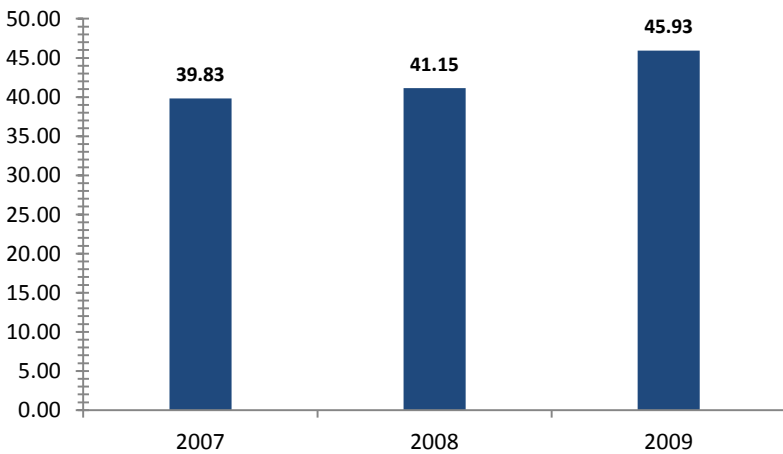
### Provincial Enrolment Rate



Source: Department of Education - Statistical Bulletin

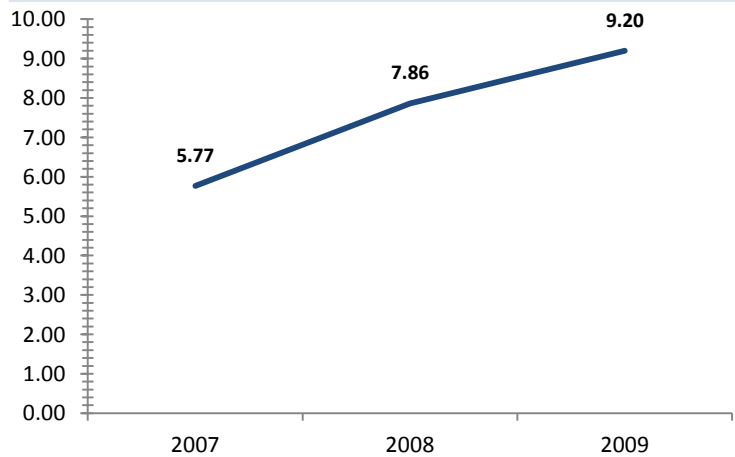
Source: Department of Education - Statistical Bulletin

### Net Enrolment Rate (Prep to Grade 8)



Source: Department of Education - Statistical Bulletin

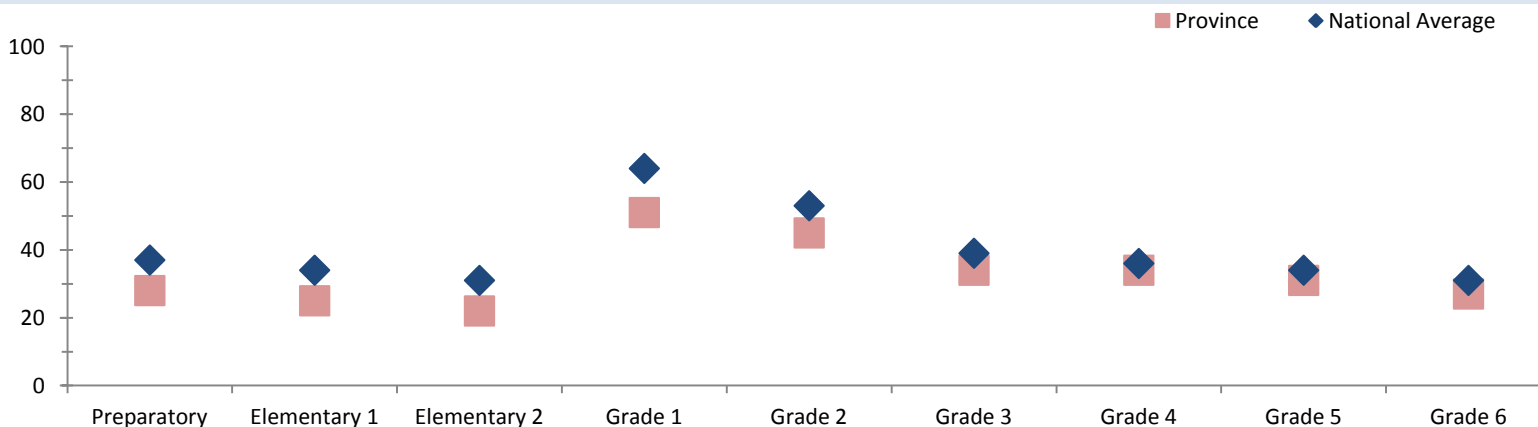
### Net Admission Rate



Source: Department of Education - Statistical Bulletin

## Quality Education

### Student Teacher Ratio, 2008



Source: Department of Education - Statistical Bulletin

# West Sepik

## Education

Indicators	Male			Change	Female			Change	Total			Change
	2007	2008	2009	2007-2009	2007	2008	2009	2007-2009	2007	2008	2009	2007-2009
<b>Teachers (#)</b>												
Teachers preparatory	76	123	132	<b>+56</b>	38	53	33	<b>-5</b>	114	176	165	<b>+51</b>
Teachers elementary 1	73	75	66	<b>-7</b>	24	37	37	<b>+13</b>	97	112	104	<b>+7</b>
Teachers elementary 2	73	67	54	<b>-19</b>	41	31	26	<b>-15</b>	114	98	80	<b>-34</b>
Teachers grade 1	57	34	41	<b>-16</b>	23	19	23	<b>0</b>	80	53	64	<b>-16</b>
Teachers grade 2	53	31	28	<b>-25</b>	21	24	22	<b>+1</b>	74	56	50	<b>-24</b>
Teachers grade 3	69	61	60	<b>-9</b>	54	51	41	<b>-13</b>	123	113	101	<b>-22</b>
Teachers grade 4	81	65	58	<b>-23</b>	43	43	38	<b>-5</b>	124	108	97	<b>-27</b>
Teachers grade 5	64	63	56	<b>-8</b>	44	44	34	<b>-10</b>	108	107	90	<b>-18</b>
Teachers grade 6	72	62	66	<b>-6</b>	41	37	32	<b>-9</b>	114	99	99	<b>-15</b>
Teachers grade 7/8	107	115	138	<b>+31</b>	74	82	85	<b>+11</b>	181	197	223	<b>+42</b>
<b>Students (#)</b>												
Students preparatory	1883	2627	2453	<b>+570</b>	1643	2301	2149	<b>+506</b>	3526	4928	4602	<b>+1076</b>
Students elementary 1	1350	1490	1491	<b>+141</b>	1116	1334	1236	<b>+120</b>	2466	2824	2727	<b>+261</b>
Students elementary 2	1310	1236	884	<b>-426</b>	1029	988	704	<b>-325</b>	2339	2224	1588	<b>-751</b>
Students grade 1	2283	1581	2188	<b>-95</b>	1727	1168	1362	<b>-365</b>	4010	2749	3550	<b>-460</b>
Students grade 2	1842	1474	1713	<b>-129</b>	1400	1079	1018	<b>-382</b>	3242	2553	2731	<b>-511</b>
Students grade 3	2656	2194	2806	<b>+150</b>	1902	1728	2190	<b>+288</b>	4558	3922	4996	<b>+438</b>
Students grade 4	2460	2172	2676	<b>+216</b>	1888	1585	1670	<b>-218</b>	4348	3757	4346	<b>-2</b>
Students grade 5	2023	1935	2290	<b>+267</b>	1523	1486	1684	<b>+161</b>	3546	3421	3974	<b>+428</b>
Students grade 6	1931	1561	2217	<b>+286</b>	1437	1159	1729	<b>+292</b>	3368	2720	3946	<b>+578</b>
Students grade 7	1856	1748	1808	<b>-48</b>	1252	1238	1252	<b>0</b>	3108	2986	3060	<b>-48</b>
Students grade 8	1111	1419	1427	<b>+316</b>	780	953	967	<b>+187</b>	1891	2372	2395	<b>+504</b>
Students grade 9	443	602	842	<b>+399</b>	323	422	597	<b>+274</b>	766	1024	1439	<b>+673</b>
Students grade 10	443	466	605	<b>+162</b>	309	295	442	<b>+133</b>	752	761	1048	<b>+296</b>
Students grade 11	81	229	284	<b>+203</b>	70	62	186	<b>+116</b>	151	291	470	<b>+319</b>
Students grade 12	94	192	278	<b>+184</b>	52	69	122	<b>+70</b>	146	261	400	<b>+254</b>
<b>Schools (#)</b>												
Elementary schools									194	340	184	<b>-10</b>
Primary schools									199	203	208	<b>+9</b>
National high schools									0	0	0	<b>0</b>
Secondary schools									10	12	10	<b>0</b>
Technical colleges									0	0	0	<b>0</b>
Vocational schools									18	8	16	<b>-2</b>

Source: Department of Education - Statistical Bulletin