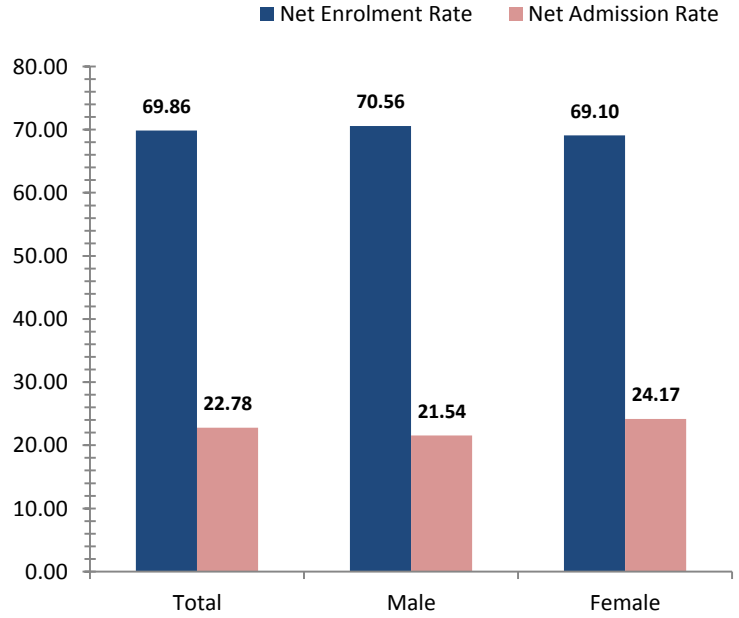


# West New Britain

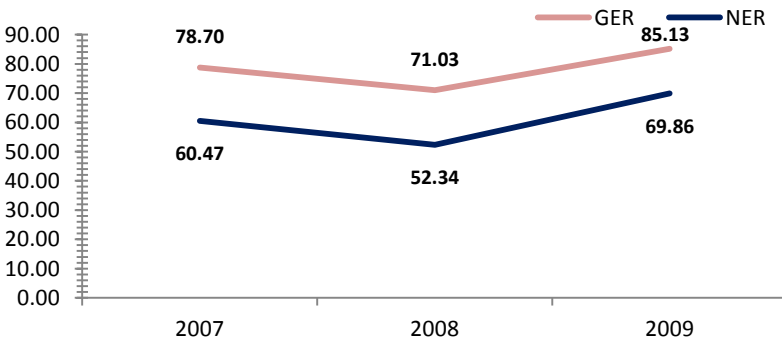
## Access To Education

Rate, 2009	Province	National	Variance
Net admission rate	22.78	25.54	-2.76
Gross enrolment rate (Prep to Grade 8)	85.13	85.52	-0.39
Net enrolment rate (Prep to Grade 8)	69.86	69.47	0.39

## Snapshot of Progress, 2009



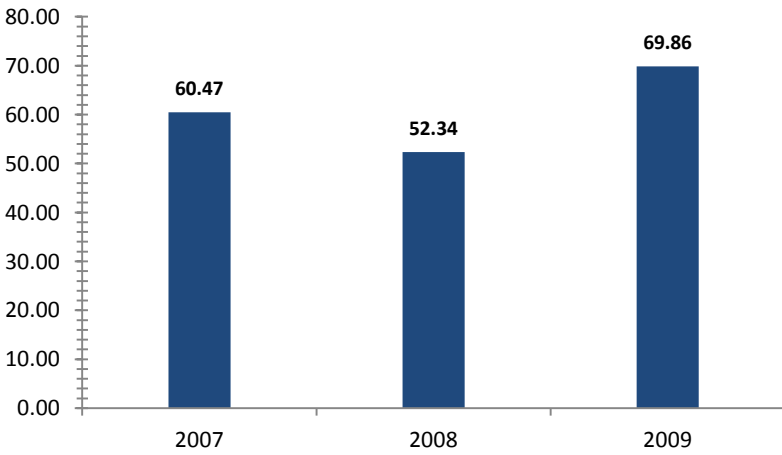
## Provincial Enrolment Rate



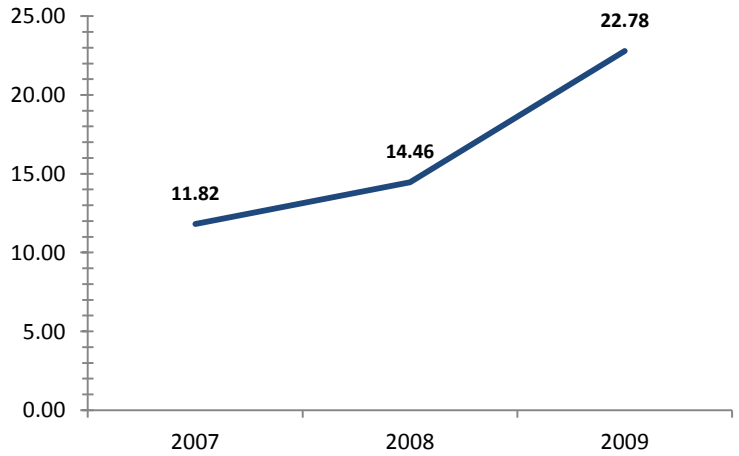
Source: Department of Education - Statistical Bulletin

Source: Department of Education - Statistical Bulletin

## Net Enrolment Rate (Prep to Grade 8)



## Net Admission Rate

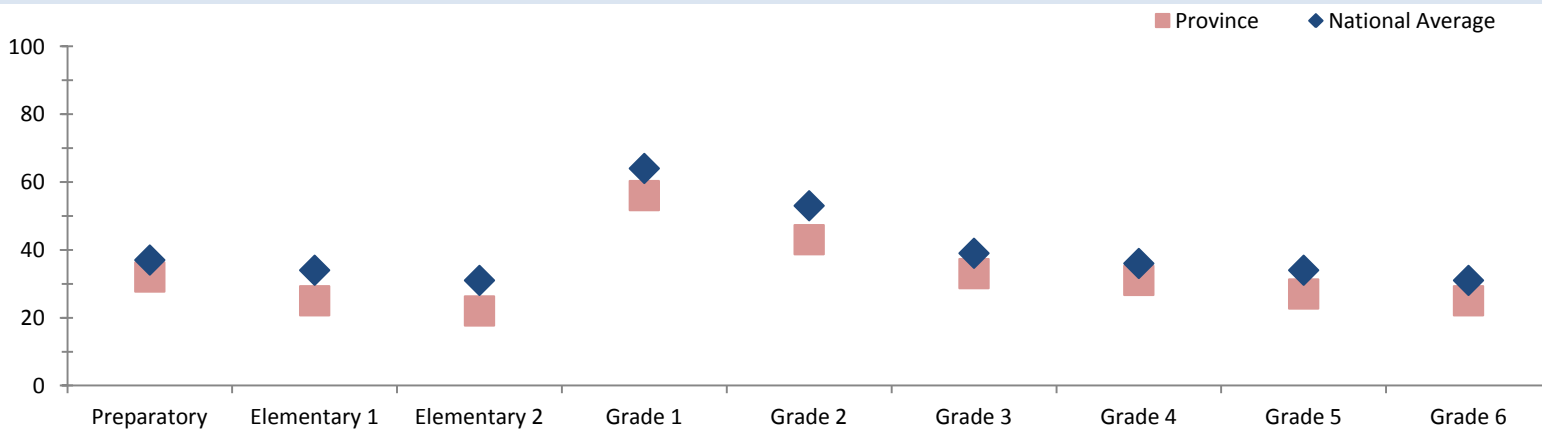


Source: Department of Education - Statistical Bulletin

Source: Department of Education - Statistical Bulletin

## Quality Education

### Student Teacher Ratio, 2008



Source: Department of Education - Statistical Bulletin

# West New Britain

## Education

Indicators	Male			Change	Female			Change	Total			Change
	2007	2008	2009	2007-2009	2007	2008	2009	2007-2009	2007	2008	2009	2007-2009

### Teachers (#)

Teachers preparatory	107	111	126	+19	117	113	135	+18	225	224	261	+36
Teachers elementary 1	82	82	99	+17	77	76	95	+18	159	158	194	+35
Teachers elementary 2	94	80	86	-8	51	54	73	+22	145	134	160	+15
Teachers grade 1	24	18	18	-6	40	28	15	-25	65	46	33	-32
Teachers grade 2	26	26	16	-10	30	29	30	0	57	55	46	-11
Teachers grade 3	53	52	47	-6	101	100	120	+19	154	152	168	+14
Teachers grade 4	60	52	50	-10	88	86	101	+13	148	138	151	+3
Teachers grade 5	68	65	68	0	79	74	75	-4	148	140	143	-5
Teachers grade 6	99	69	64	-35	90	72	78	-12	189	141	143	-46
Teachers grade 7/8	207	188	204	-3	125	113	137	+12	332	301	341	+9

### Students (#)

Students preparatory	3641	3810	5354	+1713	3538	3482	5056	+1518	7179	7292	10410	+3231
Students elementary 1	2152	2168	3356	+1204	1973	1849	2995	+1022	4125	4017	6351	+2226
Students elementary 2	1894	1618	2613	+719	1567	1448	2235	+668	3461	3066	4848	+1387
Students grade 1	1712	1416	974	-738	1438	1242	756	-682	3150	2658	1730	-1420
Students grade 2	1237	1336	1097	-140	1098	1060	875	-223	2335	2396	1972	-363
Students grade 3	2745	2736	2907	+162	2333	2326	2573	+240	5078	5062	5480	+402
Students grade 4	2417	2392	2722	+305	1878	2013	2150	+272	4295	4405	4872	+577
Students grade 5	2148	2209	2396	+248	1839	1678	1949	+110	3987	3887	4345	+358
Students grade 6	1963	2014	2113	+150	1621	1595	1676	+55	3584	3609	3789	+205
Students grade 7	1731	1802	1925	+194	1279	1420	1543	+264	3010	3222	3468	+458
Students grade 8	1551	1620	1783	+232	1157	1108	1305	+148	2708	2728	3088	+380
Students grade 9	711	418	610	-101	504	226	388	-116	1215	644	998	-217
Students grade 10	732	321	636	-96	499	204	447	-52	1231	525	1083	-148
Students grade 11	255	175	242	-13	156	104	107	-49	411	279	349	-62
Students grade 12	293	112	194	-99	217	87	123	-94	510	199	317	-193

### Schools (#)

Elementary schools									187	194	258	+71
Primary schools									165	165	168	+3
National high schools									0	0	0	0
Secondary schools									5	5	5	0
Technical colleges									0	0	0	0
Vocational schools									4	4	4	0

Source: Department of Education - Statistical Bulletin