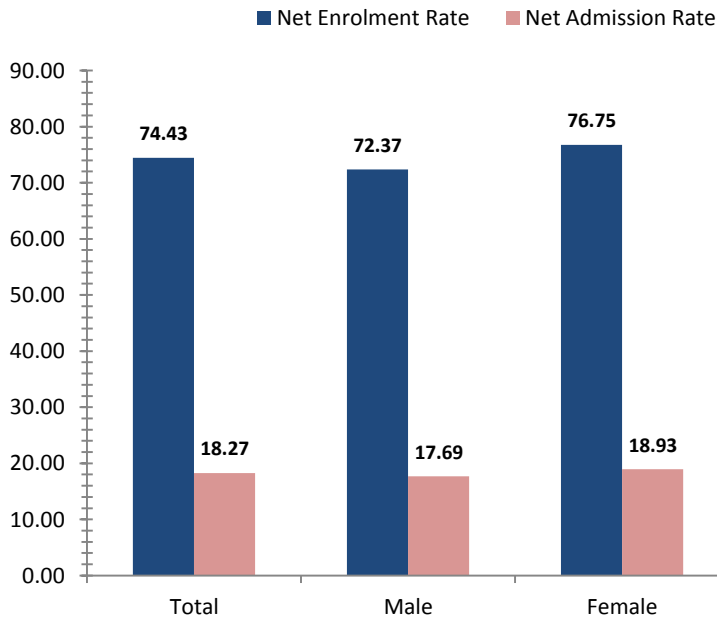


# Milne Bay

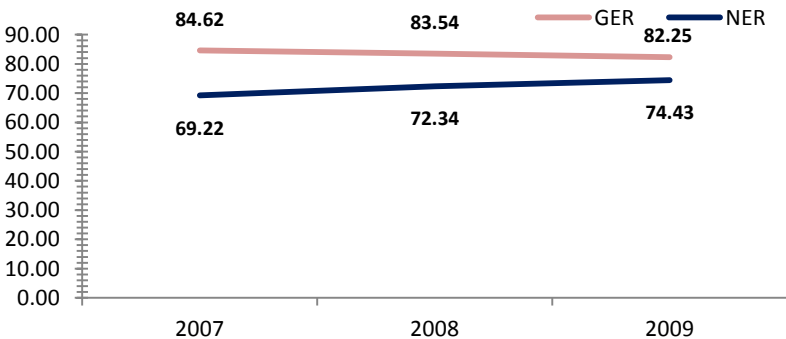
## Access To Education

Rate, 2009	Province	National	Variance
Net admission rate	18.27	25.54	-7.27
Gross enrolment rate (Prep to Grade 8)	82.25	85.52	-3.27
Net enrolment rate (Prep to Grade 8)	74.43	69.47	4.96

## Snapshot of Progress, 2009



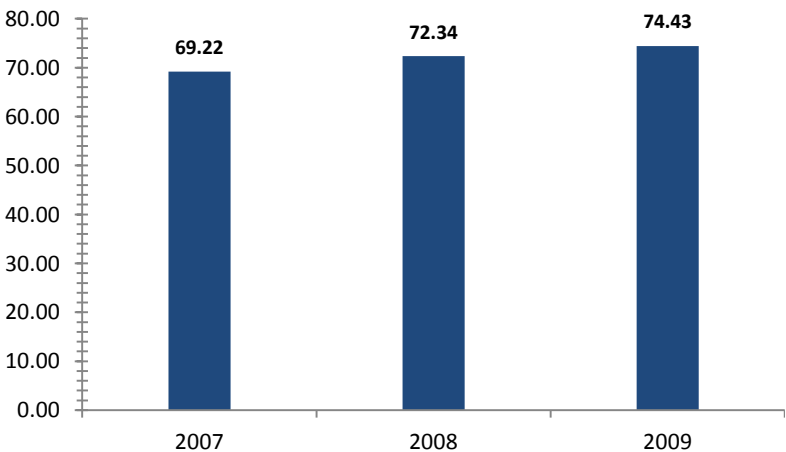
## Provincial Enrolment Rate



Source: Department of Education - Statistical Bulletin

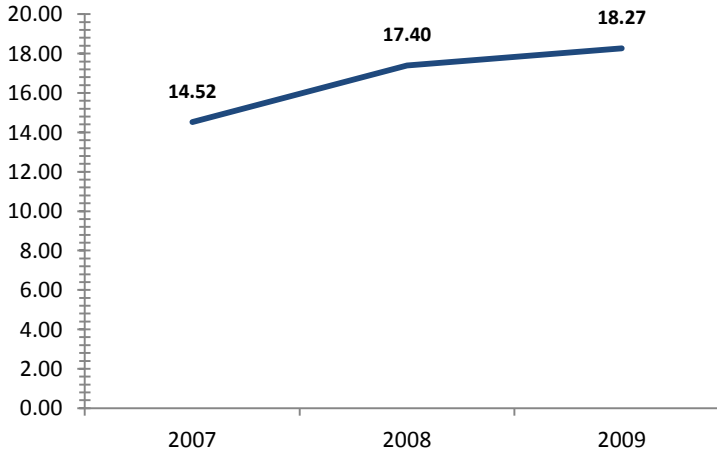
Source: Department of Education - Statistical Bulletin

## Net Enrolment Rate (Prep to Grade 8)



Source: Department of Education - Statistical Bulletin

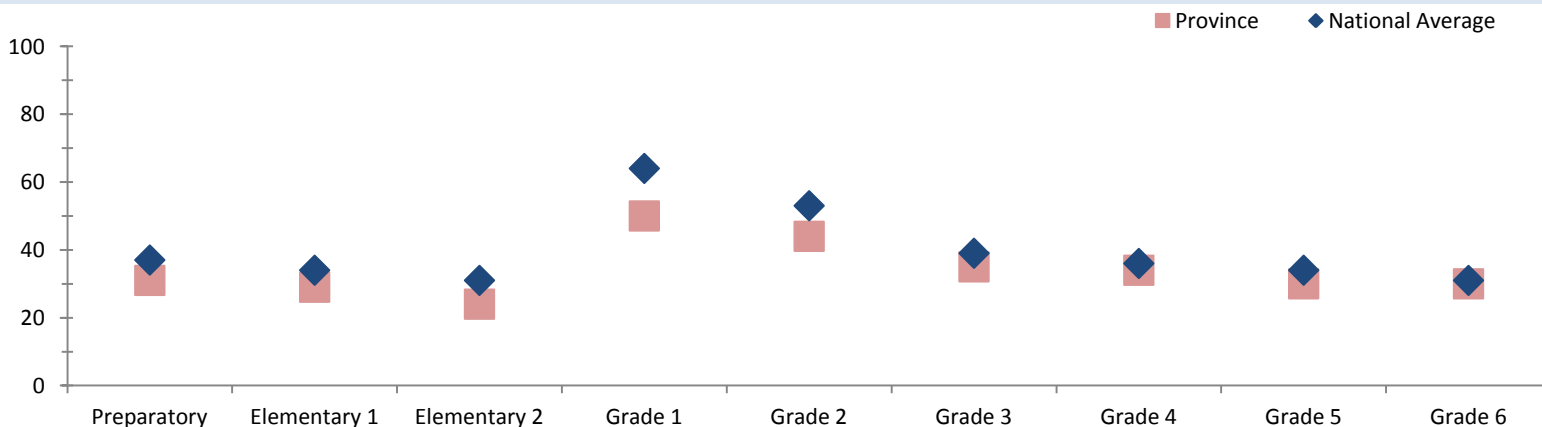
## Net Admission Rate



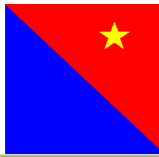
Source: Department of Education - Statistical Bulletin

## Quality Education

### Student Teacher Ratio, 2008



Source: Department of Education - Statistical Bulletin



# Milne Bay

## Education

Indicators	Male			Change	Female			Change	Total			Change
	2007	2008	2009	2007-2009	2007	2008	2009	2007-2009	2007	2008	2009	2007-2009
<b>Teachers (#)</b>												
Teachers preparatory	127	145	121	-6	88	109	124	+36	215	254	246	+31
Teachers elementary 1	90	118	132	+42	78	96	91	+13	169	214	224	+55
Teachers elementary 2	99	116	141	+42	85	98	96	+11	184	214	237	+53
Teachers grade 1	19	15	14	-5	23	10	20	-3	42	25	35	-7
Teachers grade 2	21	19	11	-10	16	21	18	+2	37	40	29	-8
Teachers grade 3	43	51	49	+6	95	107	121	+26	138	159	170	+32
Teachers grade 4	53	51	73	+20	78	92	82	+4	131	143	156	+25
Teachers grade 5	60	74	65	+5	78	78	84	+6	138	152	150	+12
Teachers grade 6	74	80	70	-4	74	73	83	+9	148	154	153	+5
Teachers grade 7/8	133	138	154	+21	113	138	125	+12	246	276	279	+33
<b>Students (#)</b>												
Students preparatory	3135	4123	4232	+1097	2922	3883	3891	+969	6057	8006	8123	+2066
Students elementary 1	2493	3384	3549	+1056	2126	2943	3269	+1143	4619	6327	6818	+2199
Students elementary 2	2364	2768	3368	+1004	2139	2397	2901	+762	4503	5165	6269	+1766
Students grade 1	1164	699	817	-347	1005	588	732	-273	2169	1287	1549	-620
Students grade 2	914	964	684	-230	873	843	531	-342	1787	1807	1215	-572
Students grade 3	2593	2863	3077	+484	2395	2777	2732	+337	4988	5640	5809	+821
Students grade 4	2412	2564	2655	+243	2301	2440	2623	+322	4713	5004	5278	+565
Students grade 5	2428	2380	2410	-18	2355	2356	2302	-53	4783	4736	4712	-71
Students grade 6	2206	2382	2125	-81	2250	2306	2229	-21	4456	4688	4354	-102
Students grade 7	1864	2012	2067	+203	1977	2125	2042	+65	3841	4137	4109	+268
Students grade 8	1547	1771	1739	+192	1651	1957	1898	+247	3198	3728	3637	+439
Students grade 9	689	726	792	+103	611	722	804	+193	1300	1448	1596	+296
Students grade 10	580	630	665	+85	571	600	695	+124	1151	1230	1360	+209
Students grade 11	116	238	228	+112	96	195	169	+73	212	433	397	+185
Students grade 12	106	185	222	+116	89	176	182	+93	195	361	404	+209
<b>Schools (#)</b>												
Elementary schools									317	370	379	+62
Primary schools									175	181	179	+4
National high schools									0	0	0	0
Secondary schools									7	7	8	+1
Technical colleges									0	0	0	0
Vocational schools									10	8	8	-2

Source: Department of Education - Statistical Bulletin