

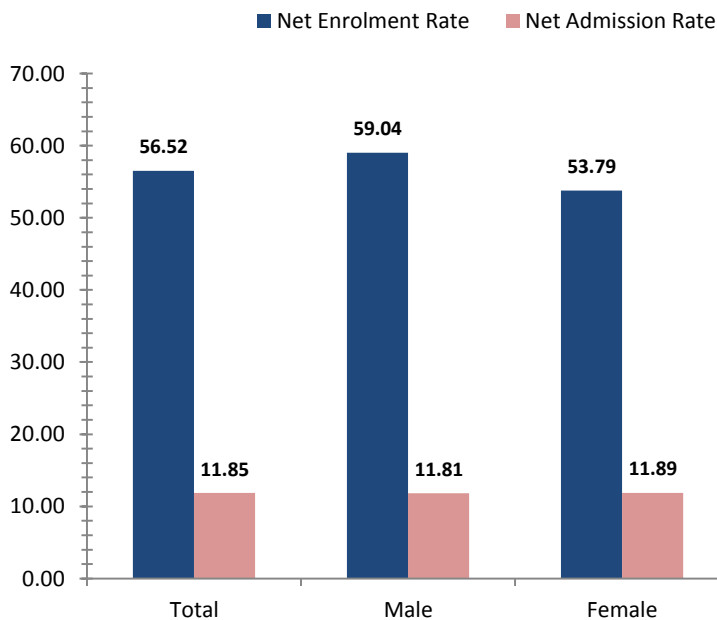


Madang

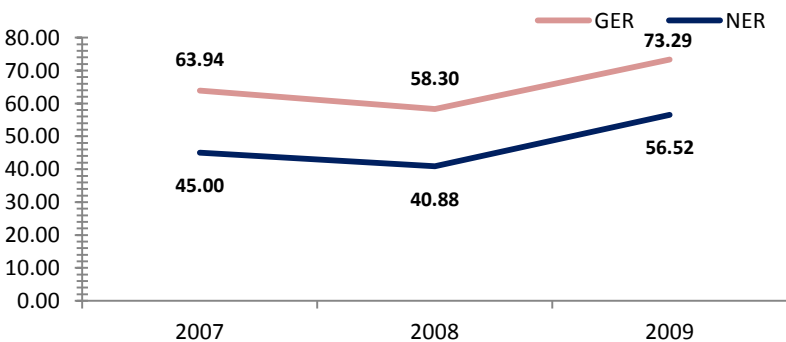
Access To Education

Rate, 2009	Province	National	Variance
Net admission rate	11.85	25.54	-13.69
Gross enrolment rate (Prep to Grade 8)	73.29	85.52	-12.23
Net enrolment rate (Prep to Grade 8)	56.52	69.47	-12.95

Snapshot of Progress, 2009



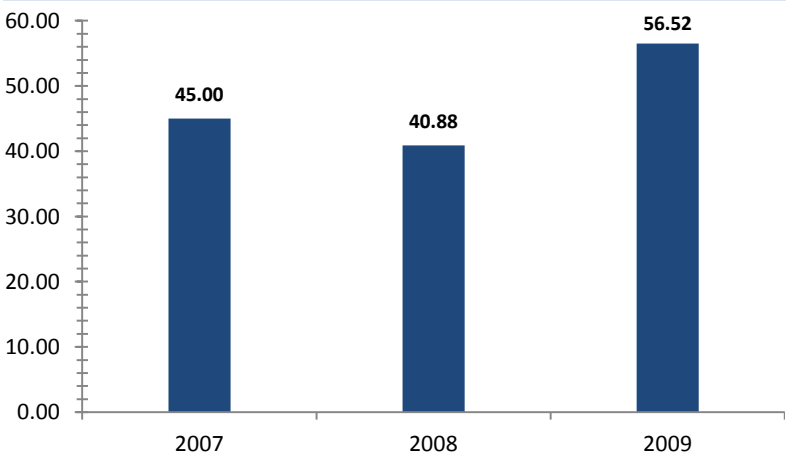
Provincial Enrolment Rate



Source: Department of Education - Statistical Bulletin

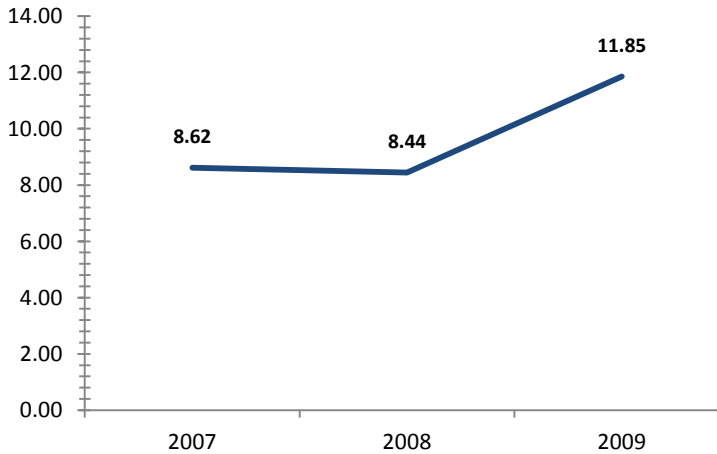
Source: Department of Education - Statistical Bulletin

Net Enrolment Rate (Prep to Grade 8)



Source: Department of Education - Statistical Bulletin

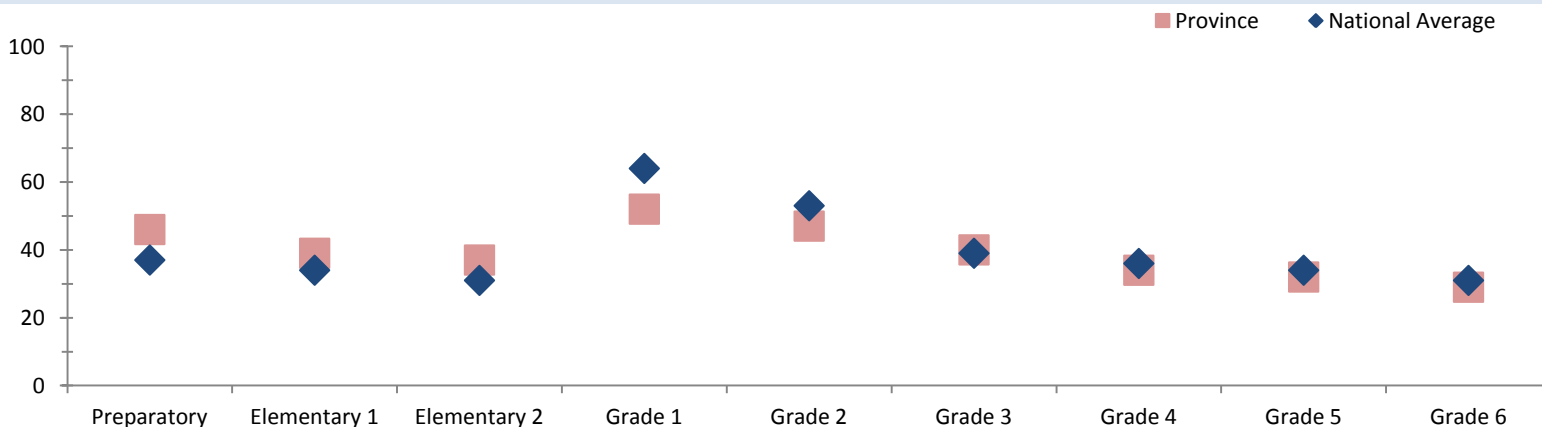
Net Admission Rate



Source: Department of Education - Statistical Bulletin

Quality Education

Student Teacher Ratio, 2008



Source: Department of Education - Statistical Bulletin

Madang

Education

Indicators	Male			Change	Female			Change	Total			Change
	2007	2008	2009	2007-2009	2007	2008	2009	2007-2009	2007	2008	2009	2007-2009
Teachers (#)												
Teachers preparatory	167	134	174	+7	89	72	77	-12	256	206	252	-4
Teachers elementary 1	153	119	151	-2	76	53	60	-16	229	172	212	-17
Teachers elementary 2	137	119	148	+11	57	51	58	+1	195	170	207	+12
Teachers grade 1	36	43	47	+11	18	30	35	+17	55	73	82	+27
Teachers grade 2	38	41	44	+6	24	24	36	+12	62	65	80	+18
Teachers grade 3	67	92	89	+22	86	110	147	+61	154	202	236	+82
Teachers grade 4	81	87	127	+46	71	105	108	+37	152	193	236	+84
Teachers grade 5	70	102	112	+42	63	88	96	+33	133	190	209	+76
Teachers grade 6	82	109	132	+50	64	69	88	+24	146	178	221	+75
Teachers grade 7/8	208	251	292	+84	121	152	164	+43	329	403	456	+127
Students (#)												
Students preparatory	5466	4998	6683	+1217	5113	4590	6039	+926	10579	9588	12722	+2143
Students elementary 1	4318	3707	5258	+940	3783	3160	4813	+1030	8101	6867	10071	+1970
Students elementary 2	3569	3438	4809	+1240	2962	2910	3970	+1008	6531	6348	8780	+2249
Students grade 1	2412	2136	2697	+285	1737	1764	1928	+191	4149	3900	4625	+476
Students grade 2	1980	1789	2555	+575	1555	1320	1724	+169	3535	3109	4279	+744
Students grade 3	4625	4474	5673	+1048	3740	3675	4320	+580	8365	8149	9993	+1628
Students grade 4	4285	3693	5139	+854	3345	3026	4050	+705	7630	6719	9189	+1559
Students grade 5	3592	3539	4311	+719	2745	2651	3554	+809	6337	6190	7865	+1528
Students grade 6	3619	2966	4060	+441	2595	2246	3125	+530	6214	5212	7185	+971
Students grade 7	3325	3115	3625	+300	2418	2300	2619	+201	5743	5415	6244	+501
Students grade 8	2844	2829	3522	+678	2106	2045	2463	+357	4950	4874	5985	+1035
Students grade 9	1057	640	1628	+571	757	427	1015	+258	1814	1067	2643	+829
Students grade 10	1006	760	1365	+359	656	474	950	+294	1662	1234	2315	+653
Students grade 11	250	290	190	-60	164	154	123	-41	414	444	313	-101
Students grade 12	199	200	170	-29	141	147	95	-46	340	347	265	-75
Schools (#)												
Elementary schools									320	334	338	+18
Primary schools									213	208	208	-5
National high schools									0	0	0	0
Secondary schools									8	8	8	0
Technical colleges									0	1	1	+1
Vocational schools									6	5	7	+1

Source: Department of Education - Statistical Bulletin