

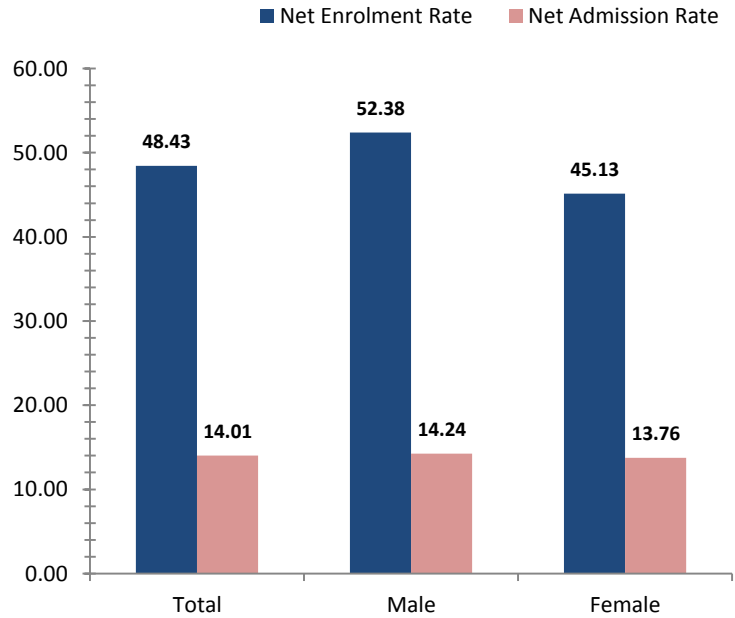


# Gulf

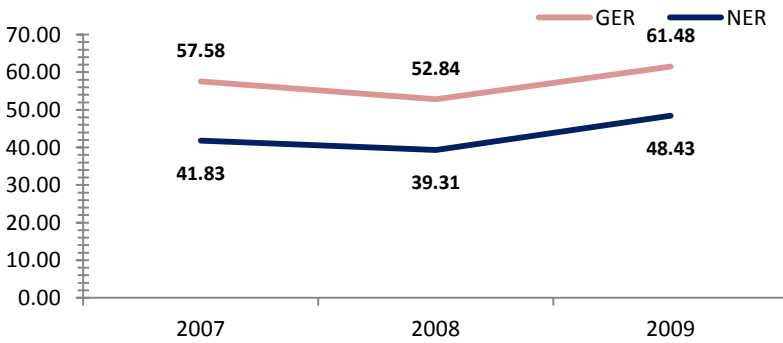
## Access To Education

Rate, 2009	Province	National	Variance
Net admission rate	14.01	25.54	-11.53
Gross enrolment rate (Prep to Grade 8)	61.48	85.52	-24.04
Net enrolment rate (Prep to Grade 8)	48.43	69.47	-21.04

## Snapshot of Progress, 2009



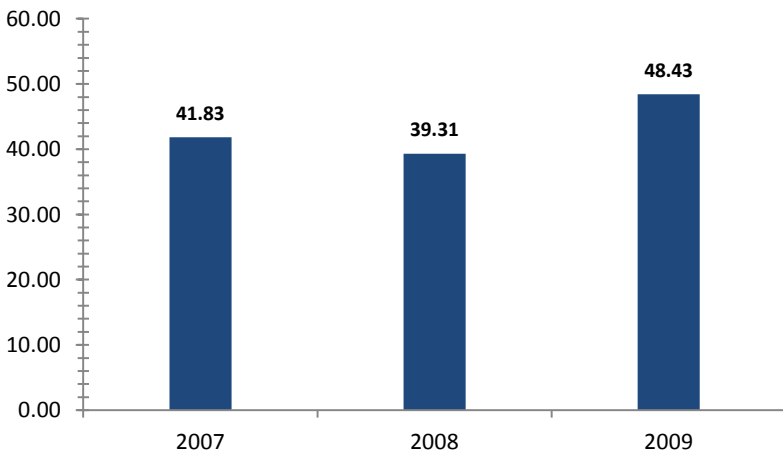
## Provincial Enrolment Rate



Source: Department of Education - Statistical Bulletin

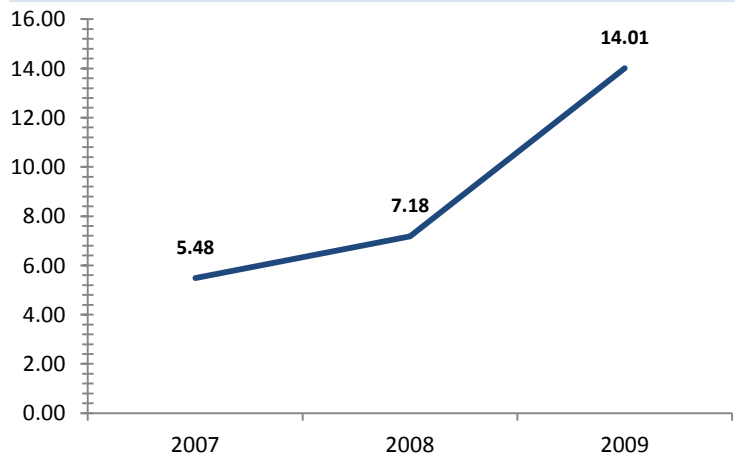
Source: Department of Education - Statistical Bulletin

## Net Enrolment Rate (Prep to Grade 8)



Source: Department of Education - Statistical Bulletin

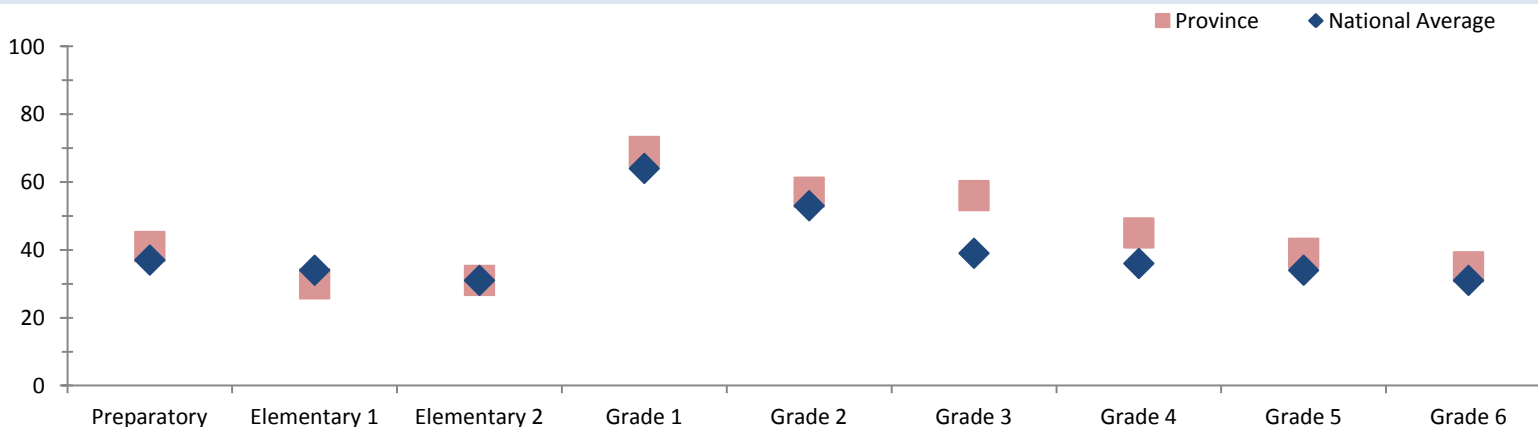
## Net Admission Rate



Source: Department of Education - Statistical Bulletin

## Quality Education

### Student Teacher Ratio, 2008



Source: Department of Education - Statistical Bulletin

# Gulf

## Education

Indicators	Male			Change	Female			Change	Total			Change
	2007	2008	2009	2007-2009	2007	2008	2009	2007-2009	2007	2008	2009	2007-2009
<b>Teachers (#)</b>												
Teachers preparatory	32	49	49	+17	17	23	27	+10	49	72	76	+27
Teachers elementary 1	33	42	44	+11	13	25	24	+11	46	67	69	+23
Teachers elementary 2	119	40	41	-78	69	26	26	-43	189	66	67	-122
Teachers grade 1	6	5	11	+5	1	2	1	0	7	7	13	+6
Teachers grade 2	3	5	8	+5	2	1	0	-2	5	7	8	+3
Teachers grade 3	25	24	26	+1	16	16	19	+3	42	40	45	+3
Teachers grade 4	20	31	29	+9	18	12	15	-3	38	43	44	+6
Teachers grade 5	21	28	30	+9	12	14	13	+1	33	42	43	+10
Teachers grade 6	24	29	27	+3	10	9	10	0	34	39	38	+4
Teachers grade 7/8	33	28	43	+10	26	32	22	-4	59	61	65	+6
<b>Students (#)</b>												
Students preparatory	1757	1588	1610	-147	1482	1435	1319	-163	3239	3023	2929	-310
Students elementary 1	1661	1147	1302	-359	1255	927	1157	-98	2916	2074	2459	-457
Students elementary 2	1476	1141	1134	-342	1145	911	858	-287	2621	2052	1992	-629
Students grade 1	332	309	512	+180	266	227	396	+130	598	536	908	+310
Students grade 2	256	239	349	+93	132	186	208	+76	388	425	557	+169
Students grade 3	1185	1324	1665	+480	952	976	1158	+206	2137	2300	2823	+686
Students grade 4	1033	1099	1475	+442	791	892	970	+179	1824	1991	2445	+621
Students grade 5	857	912	1137	+280	725	761	935	+210	1582	1673	2072	+490
Students grade 6	800	774	971	+171	600	618	738	+138	1400	1392	1709	+309
Students grade 7	575	663	700	+125	446	449	620	+174	1021	1112	1320	+299
Students grade 8	623	542	568	-55	437	403	412	-25	1060	945	980	-80
Students grade 9	475	326	434	-41	331	229	378	+47	806	555	812	+6
Students grade 10	343	249	379	+36	214	172	281	+67	557	421	660	+103
Students grade 11	88	109	114	+26	57	62	56	-1	145	171	170	+25
Students grade 12	62	86	111	+49	40	43	55	+15	102	129	166	+64
<b>Schools (#)</b>												
Elementary schools									141	137	158	+17
Primary schools									111	116	116	+5
National high schools									0	0	0	0
Secondary schools									6	6	6	0
Technical colleges									0	0	0	0
Vocational schools									4	2	4	0

Source: Department of Education - Statistical Bulletin