

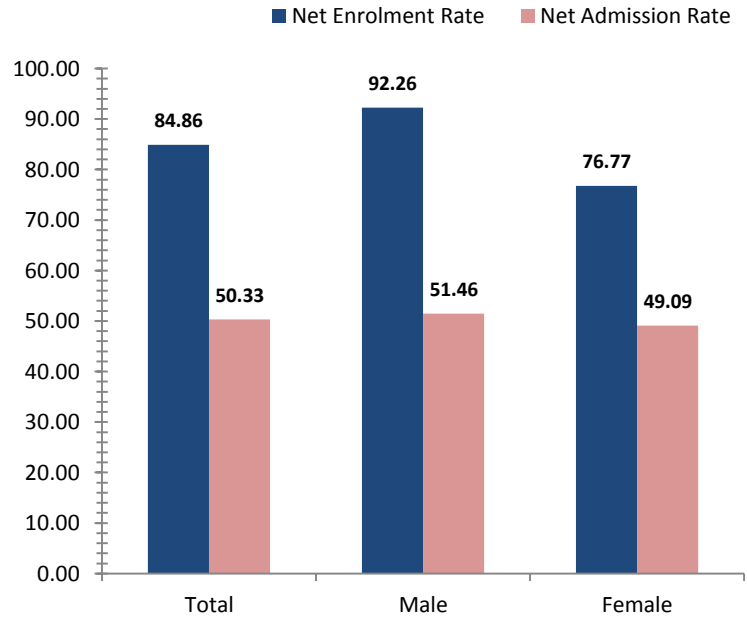


Enga

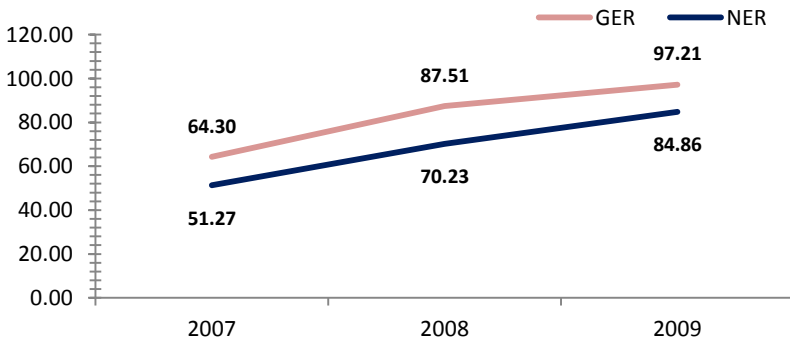
Access To Education

Rate, 2009	Province	National	Variance
Net admission rate	50.33	25.54	24.79
Gross enrolment rate (Prep to Grade 8)	97.21	85.52	11.69
Net enrolment rate (Prep to Grade 8)	84.86	69.47	15.39

Snapshot of Progress, 2009



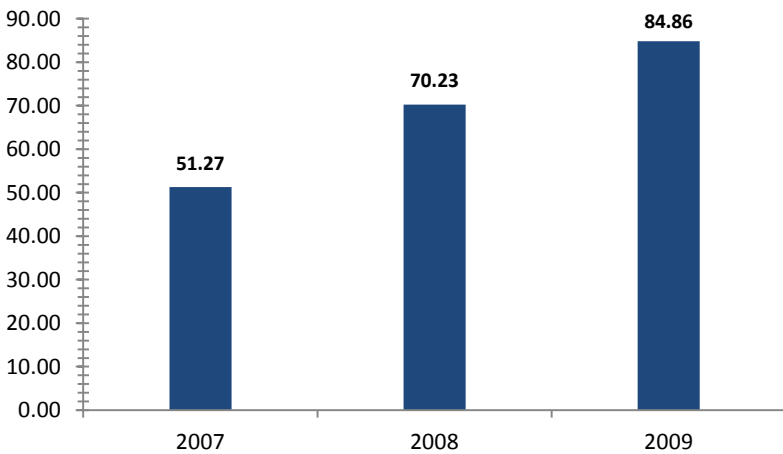
Provincial Enrolment Rate



Source: Department of Education - Statistical Bulletin

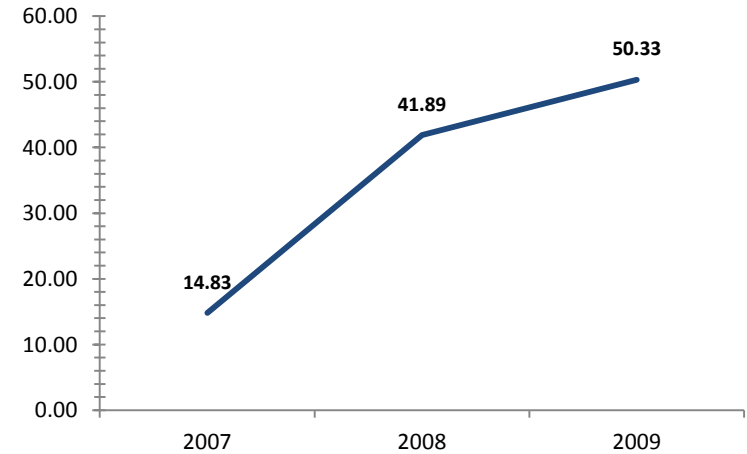
Source: Department of Education - Statistical Bulletin

Net Enrolment Rate (Prep to Grade 8)



Source: Department of Education - Statistical Bulletin

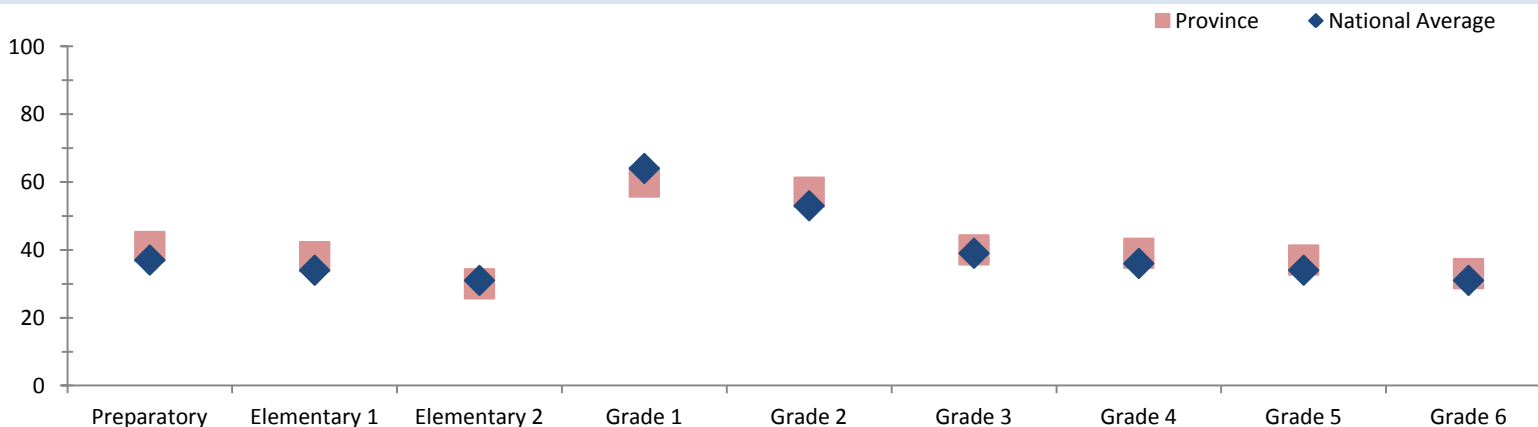
Net Admission Rate



Source: Department of Education - Statistical Bulletin

Quality Education

Student Teacher Ratio, 2008



Source: Department of Education - Statistical Bulletin



Enga

Education

Indicators	Male			Change	Female			Change	Total			Change
	2007	2008	2009	2007-2009	2007	2008	2009	2007-2009	2007	2008	2009	2007-2009
Teachers (#)												
Teachers preparatory	92	163	173	+81	84	135	160	+76	177	298	334	+157
Teachers elementary 1	82	136	144	+62	68	102	138	+70	151	238	283	+132
Teachers elementary 2	95	139	158	+63	44	75	97	+53	140	214	256	+116
Teachers grade 1	28	37	26	-2	7	10	8	+1	36	48	34	-2
Teachers grade 2	27	32	31	+4	5	7	7	+2	32	39	39	+7
Teachers grade 3	81	108	111	+30	28	59	56	+28	109	167	167	+58
Teachers grade 4	65	106	98	+33	36	46	58	+22	101	153	156	+55
Teachers grade 5	65	94	94	+29	23	44	47	+24	88	138	142	+54
Teachers grade 6	68	93	86	+18	20	44	58	+38	89	137	145	+56
Teachers grade 7/8	131	204	200	+69	45	67	69	+24	176	271	269	+93
Students (#)												
Students preparatory	3642	6781	7700	+4058	2875	5586	6349	+3474	6517	12367	14049	+7532
Students elementary 1	2942	5085	5901	+2959	2258	4046	4873	+2615	5200	9131	10774	+5574
Students elementary 2	2522	3846	5070	+2548	1989	2779	3985	+1996	4511	6625	9055	+4544
Students grade 1	1172	1723	1565	+393	740	1203	1161	+421	1912	2926	2726	+814
Students grade 2	902	1406	1387	+485	558	894	980	+422	1460	2300	2367	+907
Students grade 3	2520	4075	4251	+1731	1694	2665	2964	+1270	4214	6740	7215	+3001
Students grade 4	2286	3764	3888	+1602	1377	2369	2581	+1204	3663	6133	6469	+2806
Students grade 5	1928	3225	3406	+1478	1216	1907	2178	+962	3144	5132	5584	+2440
Students grade 6	1764	2893	3109	+1345	1035	1721	1940	+905	2799	4614	5049	+2250
Students grade 7	1474	2200	2320	+846	848	1276	1416	+568	2322	3476	3736	+1414
Students grade 8	1358	1946	2134	+776	686	1089	1233	+547	2044	3035	3367	+1323
Students grade 9	1336	1056	1132	-204	620	615	640	+20	1956	1671	1772	-184
Students grade 10	1165	1067	1054	-111	516	464	478	-38	1681	1531	1532	-149
Students grade 11	442	497	410	-32	154	200	146	-8	596	697	556	-40
Students grade 12	383	442	479	+96	166	139	169	+3	549	581	648	+99
Schools (#)												
Elementary schools								186	288	300	+114	
Primary schools								141	145	141	0	
National high schools								0	0	0	0	
Secondary schools								8	10	8	0	
Technical colleges								0	0	0	0	
Vocational schools								12	5	13	+1	

Source: Department of Education - Statistical Bulletin