

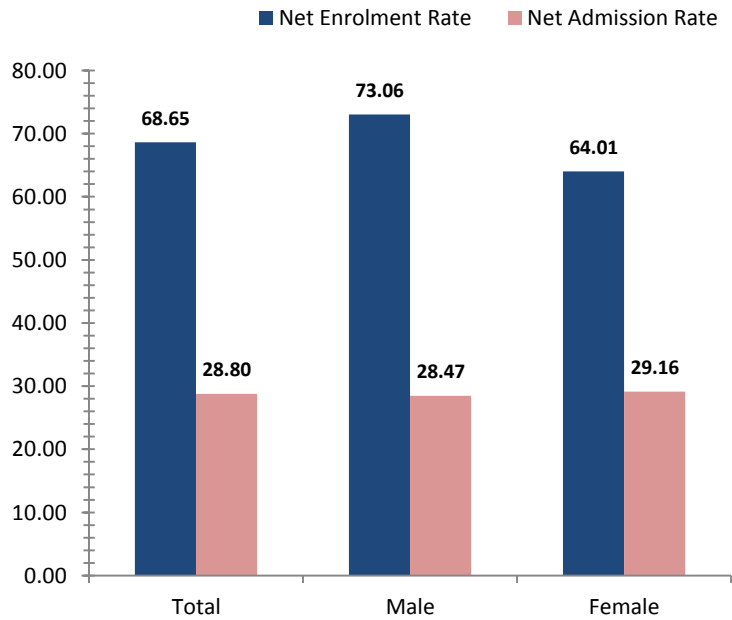


# Eastern Highlands

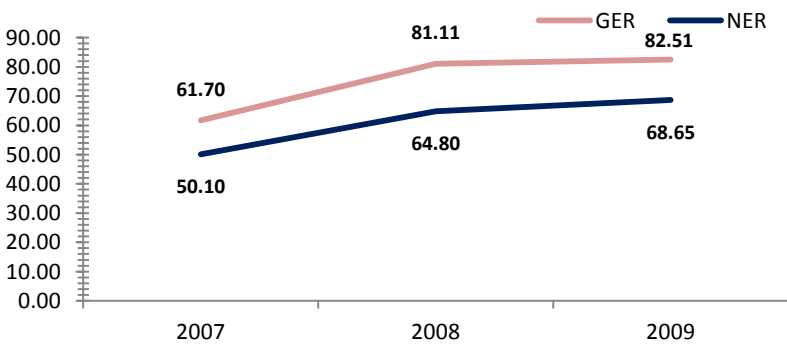
## Access To Education

Rate, 2009	Province	National	Variance
Net admission rate	28.80	25.54	3.26
Gross enrolment rate (Prep to Grade 8)	82.51	85.52	-3.01
Net enrolment rate (Prep to Grade 8)	68.65	69.47	-0.82

## Snapshot of Progress, 2009



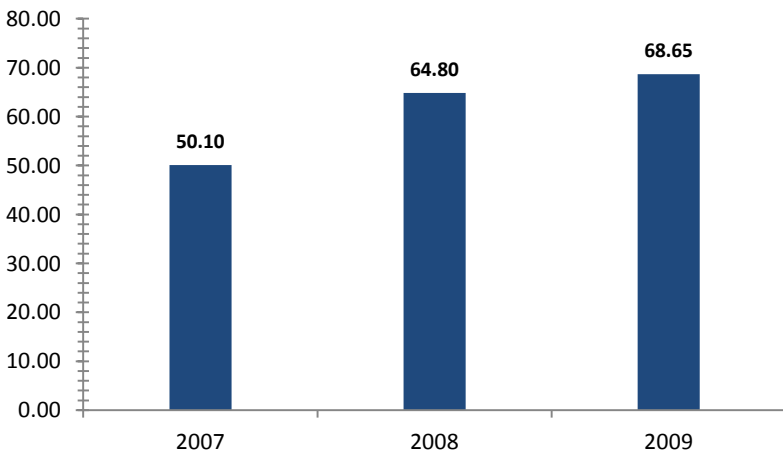
## Provincial Enrolment Rate



Source: Department of Education - Statistical Bulletin

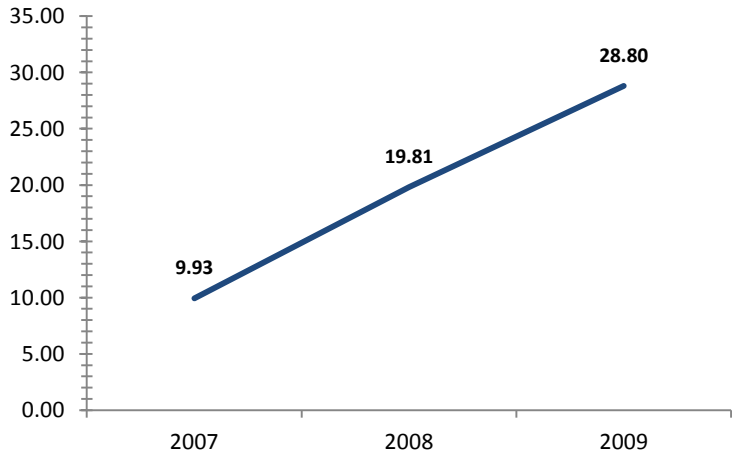
Source: Department of Education - Statistical Bulletin

## Net Enrolment Rate (Prep to Grade 8)



Source: Department of Education - Statistical Bulletin

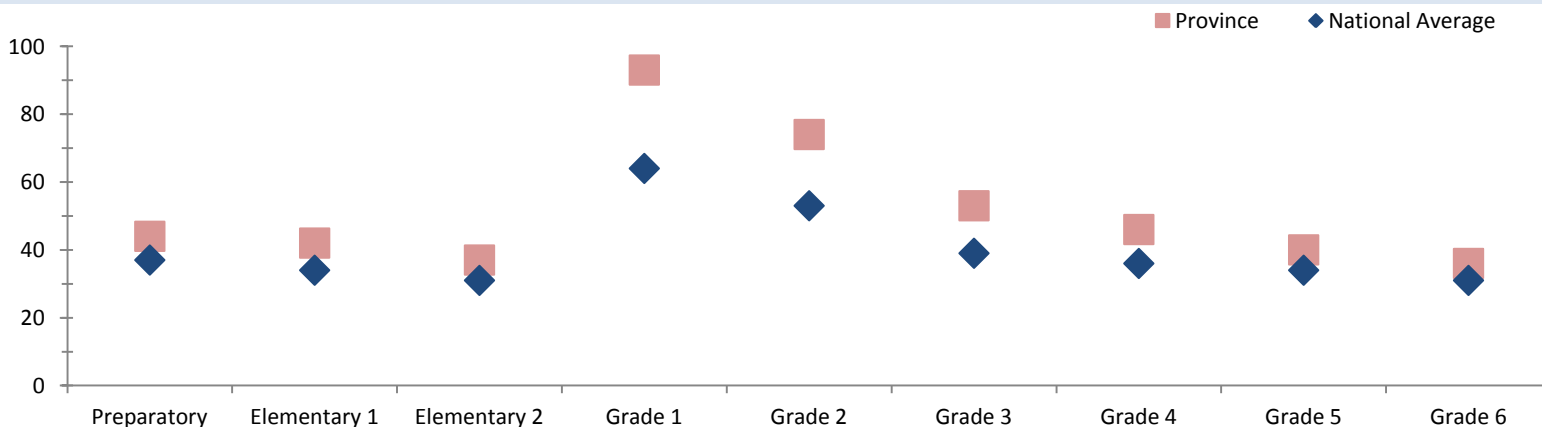
## Net Admission Rate



Source: Department of Education - Statistical Bulletin

## Quality Education

### Student Teacher Ratio, 2008



Source: Department of Education - Statistical Bulletin

# Eastern Highlands

## Education

Indicators	Male			Change	Female			Change	Total			Change
	2007	2008	2009	2007-2009	2007	2008	2009	2007-2009	2007	2008	2009	2007-2009
<b>Teachers (#)</b>												
Teachers preparatory	142	212	176	+34	60	69	136	+76	203	281	313	+110
Teachers elementary 1	116	132	139	+23	65	101	145	+80	182	233	285	+103
Teachers elementary 2	81	63	162	+81	106	144	115	+9	187	207	277	+90
Teachers grade 1	51	65	59	+8	20	24	16	-4	72	90	76	+4
Teachers grade 2	62	81	63	+1	13	19	18	+5	75	101	81	+6
Teachers grade 3	103	144	148	+45	94	104	118	+24	197	249	267	+70
Teachers grade 4	116	145	145	+29	77	88	97	+20	193	233	243	+50
Teachers grade 5	119	144	137	+18	75	92	77	+2	194	236	214	+20
Teachers grade 6	121	148	135	+14	70	70	81	+11	191	219	216	+25
Teachers grade 7/8	227	292	276	+49	120	152	146	+26	347	444	422	+75
<b>Students (#)</b>												
Students preparatory	5077	6478	7259	+2182	4669	6098	6691	+2022	9746	12576	13950	+4204
Students elementary 1	4082	5157	6118	+2036	3703	4662	5502	+1799	7785	9819	11620	+3835
Students elementary 2	3705	4137	5685	+1980	3083	3647	4914	+1831	6788	7784	10599	+3811
Students grade 1	2915	4611	4027	+1112	2504	3797	2770	+266	5419	8408	6797	+1378
Students grade 2	2549	4191	4000	+1451	2010	3368	2529	+519	4559	7559	6529	+1970
Students grade 3	4719	7565	7127	+2408	3637	5816	5872	+2235	8356	13381	12999	+4643
Students grade 4	4309	6216	6553	+2244	3243	4554	4476	+1233	7552	10770	11029	+3477
Students grade 5	3812	5614	5525	+1713	2904	4065	3849	+945	6716	9679	9374	+2658
Students grade 6	3564	4736	4900	+1336	2328	3310	3509	+1181	5892	8046	8409	+2517
Students grade 7	2686	3674	3978	+1292	1734	2293	2748	+1014	4420	5967	6726	+2306
Students grade 8	2648	3324	3605	+957	1590	2078	2154	+564	4238	5402	5759	+1521
Students grade 9	1954	2409	2174	+220	1126	1281	1190	+64	3080	3690	3364	+284
Students grade 10	1527	1881	2810	+1283	733	857	1147	+414	2260	2738	3957	+1697
Students grade 11	577	788	623	+46	291	302	294	+3	868	1090	917	+49
Students grade 12	430	516	494	+64	208	255	180	-28	638	771	674	+36
<b>Schools (#)</b>												
Elementary schools									288	312	319	+31
Primary schools									238	244	241	+3
National high schools									1	1	0	-1
Secondary schools									10	12	12	+2
Technical colleges									0	1	1	+1
Vocational schools									5	5	5	0

Source: Department of Education - Statistical Bulletin