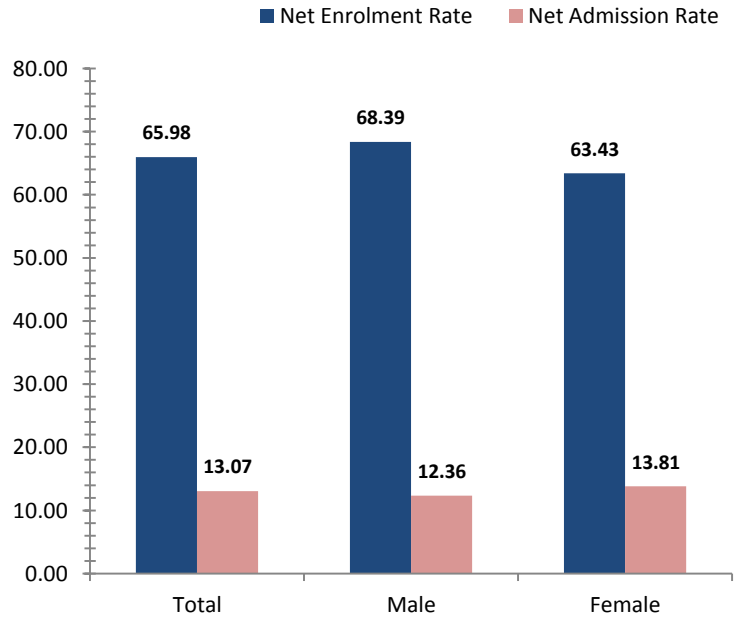


East Sepik

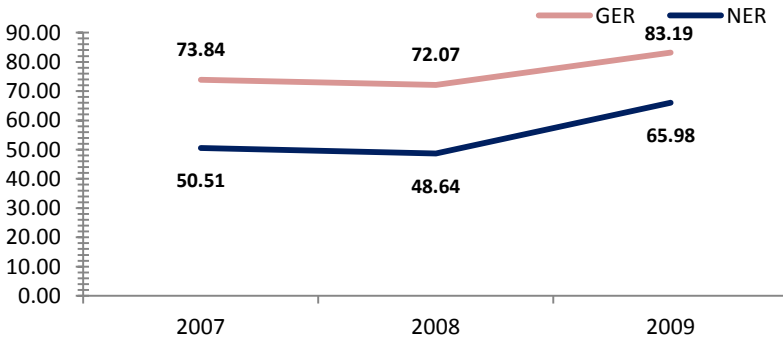
Access To Education

Rate, 2009	Province	National	Variance
Net admission rate	13.07	25.54	-12.47
Gross enrolment rate (Prep to Grade 8)	83.19	85.52	-2.33
Net enrolment rate (Prep to Grade 8)	65.98	69.47	-3.49

Snapshot of Progress, 2009



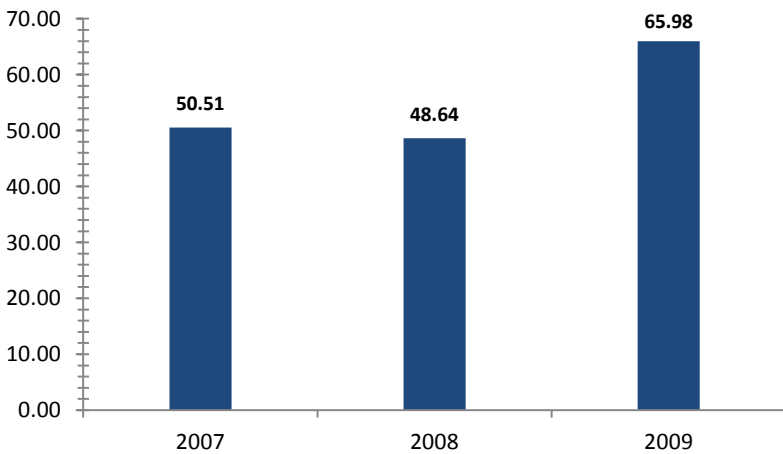
Provincial Enrolment Rate



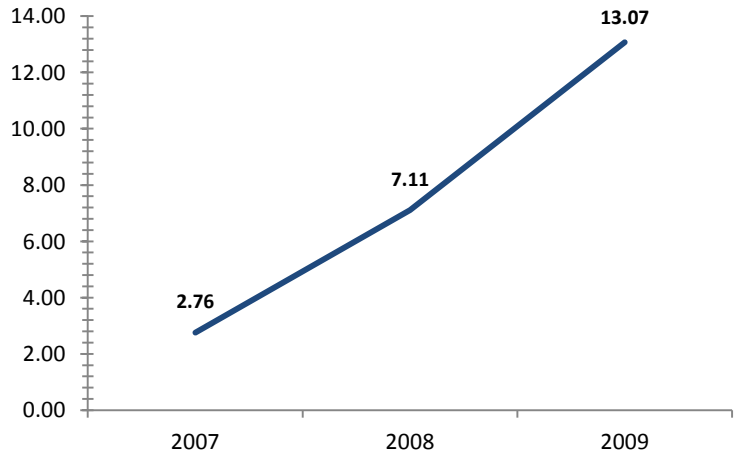
Source: Department of Education - Statistical Bulletin

Source: Department of Education - Statistical Bulletin

Net Enrolment Rate (Prep to Grade 8)



Net Admission Rate

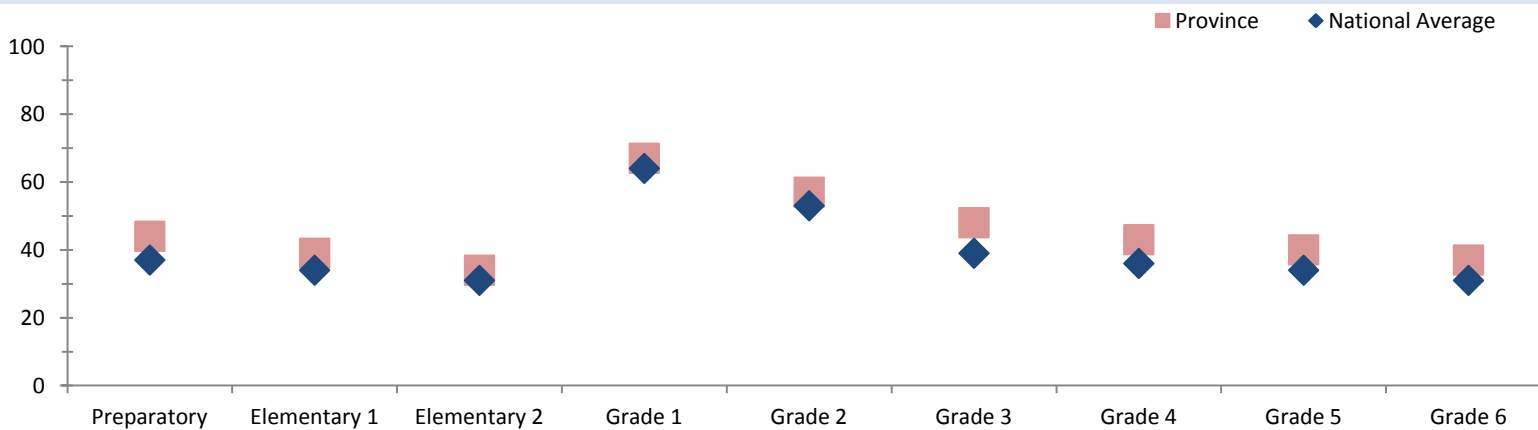


Source: Department of Education - Statistical Bulletin

Source: Department of Education - Statistical Bulletin

Quality Education

Student Teacher Ratio, 2008



Source: Department of Education - Statistical Bulletin



East Sepik

Education

Indicators	Male			Change	Female			Change	Total			Change
	2007	2008	2009	2007-2009	2007	2008	2009	2007-2009	2007	2008	2009	2007-2009
Teachers (#)												
Teachers preparatory	73	110	132	+59	41	74	92	+51	115	184	224	+109
Teachers elementary 1	63	92	113	+50	32	61	67	+35	96	153	180	+84
Teachers elementary 2	70	93	95	+25	31	56	60	+29	102	149	155	+53
Teachers grade 1	44	56	71	+27	38	51	33	-5	82	107	104	+22
Teachers grade 2	42	61	89	+47	33	47	60	+27	76	108	149	+73
Teachers grade 3	62	88	198	+136	79	106	169	+90	142	194	368	+226
Teachers grade 4	77	94	146	+69	68	94	187	+119	145	189	333	+188
Teachers grade 5	92	116	162	+70	54	68	156	+102	146	185	318	+172
Teachers grade 6	72	101	156	+84	61	70	151	+90	134	172	307	+173
Teachers grade 7/8	169	218	358	+189	103	135	232	+129	273	354	590	+317
Students (#)												
Students preparatory	2654	4379	6170	+3516	2393	3873	5746	+3353	5047	8252	11916	+6869
Students elementary 1	1908	3255	4859	+2951	1629	2804	4436	+2807	3537	6059	9295	+5758
Students elementary 2	1792	2702	3851	+2059	1495	2396	3500	+2005	3287	5098	7351	+4064
Students grade 1	3055	3893	6071	+3016	2552	3408	4881	+2329	5607	7301	10952	+5345
Students grade 2	2251	3328	6659	+4408	1897	2878	4197	+2300	4148	6206	10856	+6708
Students grade 3	3592	5084	10517	+6925	2919	4265	9151	+6232	6511	9349	19668	+13157
Students grade 4	3367	4642	9687	+6320	2608	3667	6979	+4371	5975	8309	16666	+10691
Students grade 5	2949	4210	8825	+5876	2320	3223	6666	+4346	5269	7433	15491	+10222
Students grade 6	2426	3685	7908	+5482	1947	2836	5932	+3985	4373	6521	13840	+9467
Students grade 7	2322	3493	6263	+3941	1671	2522	4884	+3213	3993	6015	11147	+7154
Students grade 8	2150	2778	5726	+3576	1497	2031	4330	+2833	3647	4809	10056	+6409
Students grade 9	963	1766	1873	+910	960	1231	1272	+312	1923	2997	3145	+1222
Students grade 10	748	1458	1505	+757	748	1030	1023	+275	1496	2488	2528	+1032
Students grade 11	404	406	503	+99	320	349	344	+24	724	755	847	+123
Students grade 12	292	299	1311	+1019	230	277	787	+557	522	576	2098	+1576
Schools (#)												
Elementary schools									647	205	257	-390
Primary schools									253	254	263	+10
National high schools									1	1	1	0
Secondary schools									13	14	14	+1
Technical colleges									0	0	0	0
Vocational schools									6	5	8	+2

Source: Department of Education - Statistical Bulletin