

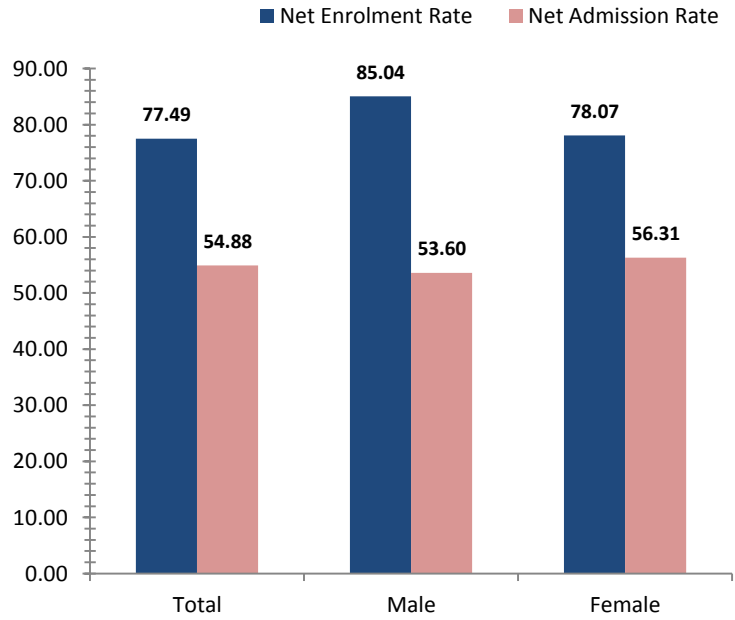


Chimbu

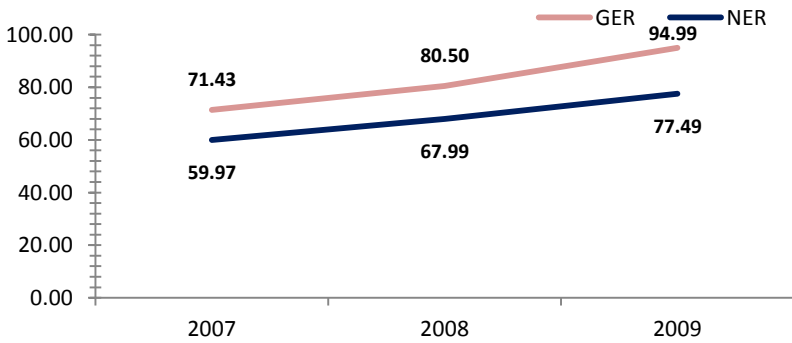
Access To Education

Rate, 2009	Province	National	Variance
Net admission rate	54.88	25.54	29.34
Gross enrolment rate (Prep to Grade 8)	94.99	85.52	9.47
Net enrolment rate (Prep to Grade 8)	77.49	69.47	8.02

Snapshot of Progress, 2009



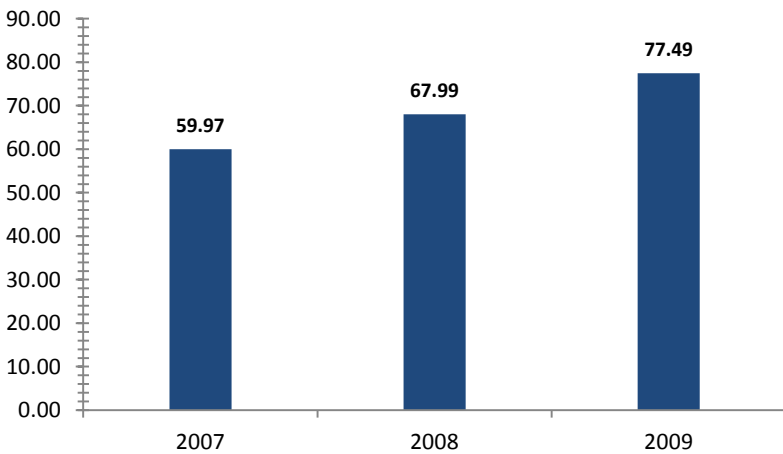
Provincial Enrolment Rate



Source: Department of Education - Statistical Bulletin

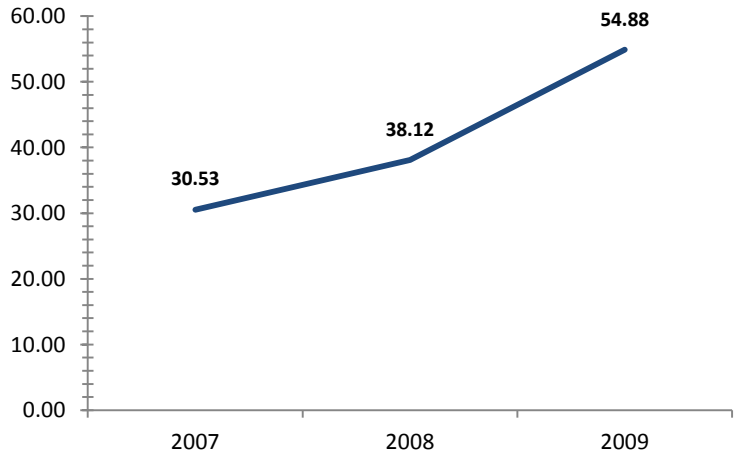
Source: Department of Education - Statistical Bulletin

Net Enrolment Rate (Prep to Grade 8)



Source: Department of Education - Statistical Bulletin

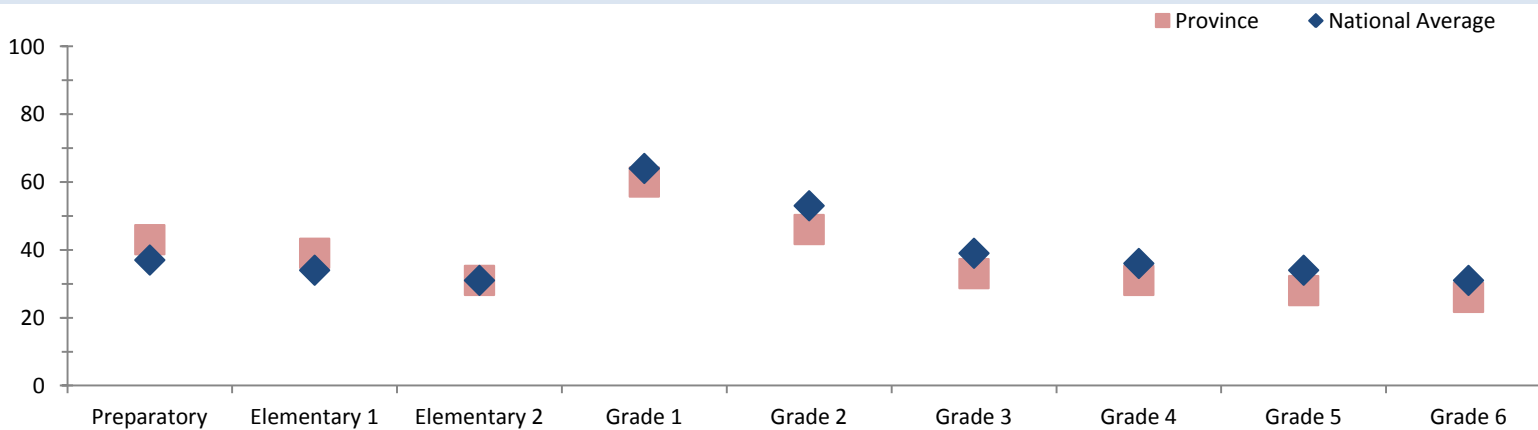
Net Admission Rate



Source: Department of Education - Statistical Bulletin

Quality Education

Student Teacher Ratio, 2008



Source: Department of Education - Statistical Bulletin



Chimbu

Education

Indicators	Male			Change	Female			Change	Total			Change
	2007	2008	2009	2007-2009	2007	2008	2009	2007-2009	2007	2008	2009	2007-2009
Teachers (#)												
Teachers preparatory	138	156	153	+15	52	45	55	+3	191	201	209	+18
Teachers elementary 1	132	138	148	+16	41	49	50	+9	173	187	199	+26
Teachers elementary 2	247	137	157	-90	78	60	59	-19	325	197	216	-109
Teachers grade 1	22	23	18	-4	13	8	6	-7	35	31	24	-11
Teachers grade 2	29	28	27	-2	7	5	7	0	36	33	34	-2
Teachers grade 3	109	117	108	-1	54	59	63	+9	163	176	171	+8
Teachers grade 4	107	115	116	+9	50	39	39	-11	157	154	155	-2
Teachers grade 5	103	101	107	+4	48	43	40	-8	151	144	147	-4
Teachers grade 6	108	99	101	-7	46	47	36	-10	154	146	137	-17
Teachers grade 7/8	204	196	189	-15	59	66	69	+10	263	262	259	-4
Students (#)												
Students preparatory	4825	4690	5745	+920	4492	4079	5126	+634	9317	8769	10871	+1554
Students elementary 1	3979	3994	4750	+771	3589	3378	4201	+612	7568	7372	8951	+1383
Students elementary 2	3710	3336	4155	+445	3047	2778	3360	+313	6757	6114	7515	+758
Students grade 1	914	1052	948	+34	808	869	762	-46	1722	1921	1710	-12
Students grade 2	830	840	1027	+197	671	715	674	+3	1501	1555	1701	+200
Students grade 3	3053	3171	3504	+451	2381	2652	2725	+344	5434	5823	6229	+795
Students grade 4	2727	2764	3259	+532	2037	2120	2317	+280	4764	4884	5576	+812
Students grade 5	2447	2393	2860	+413	1839	1765	2107	+268	4286	4158	4967	+681
Students grade 6	2252	2209	2551	+299	1595	1624	1752	+157	3847	3833	4303	+456
Students grade 7	1755	1771	2200	+445	1229	1212	1573	+344	2984	2983	3773	+789
Students grade 8	1712	1744	1938	+226	1049	1095	1272	+223	2761	2839	3210	+449
Students grade 9	971	1195	1476	+505	526	657	806	+280	1497	1852	2282	+785
Students grade 10	833	1032	1360	+527	386	524	641	+255	1219	1556	2002	+783
Students grade 11	92	402	453	+361	58	156	179	+121	150	558	632	+482
Students grade 12	100	319	370	+270	35	127	146	+111	135	446	516	+381
Schools (#)												
Elementary schools									303	257	277	-26
Primary schools									139	138	149	+10
National high schools									0	0	0	0
Secondary schools									16	16	15	-1
Technical colleges									0	0	0	0
Vocational schools									9	9	9	0

Source: Department of Education - Statistical Bulletin