

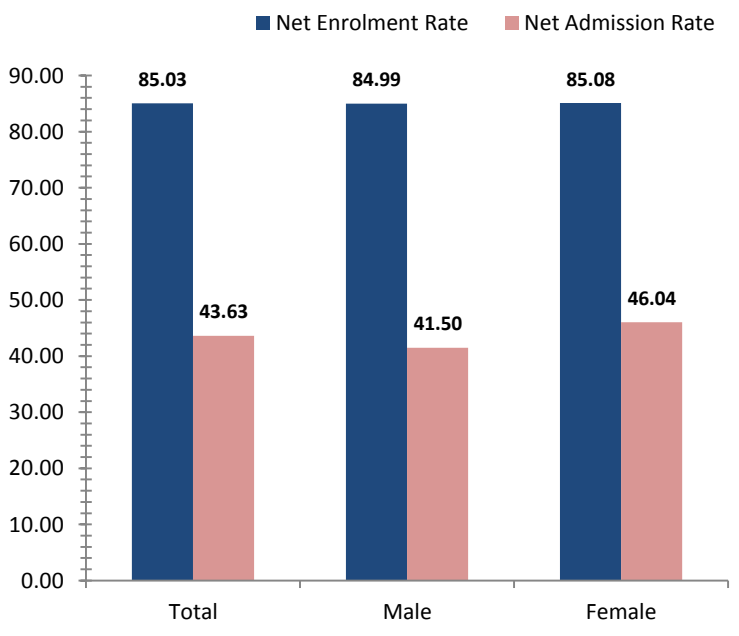


# Central

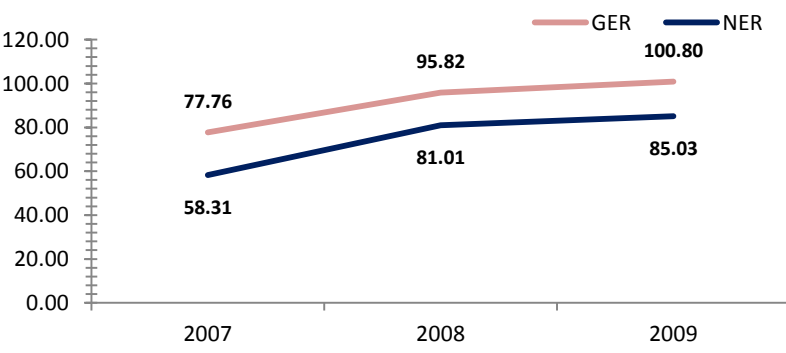
## Access To Education

Rate, 2009	Province	National	Variance
Net admission rate	43.63	25.54	18.09
Gross enrolment rate (Prep to Grade 8)	100.80	85.52	15.28
Net enrolment rate (Prep to Grade 8)	85.03	69.47	15.56

## Snapshot of Progress, 2009



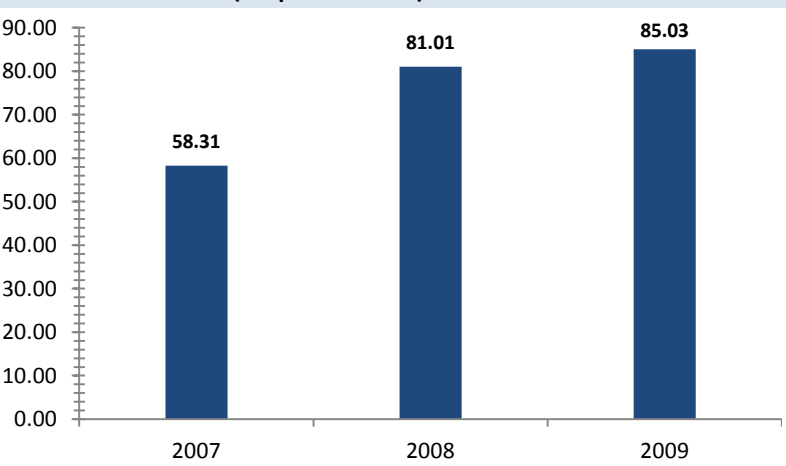
## Provincial Enrolment Rate



Source: Department of Education - Statistical Bulletin

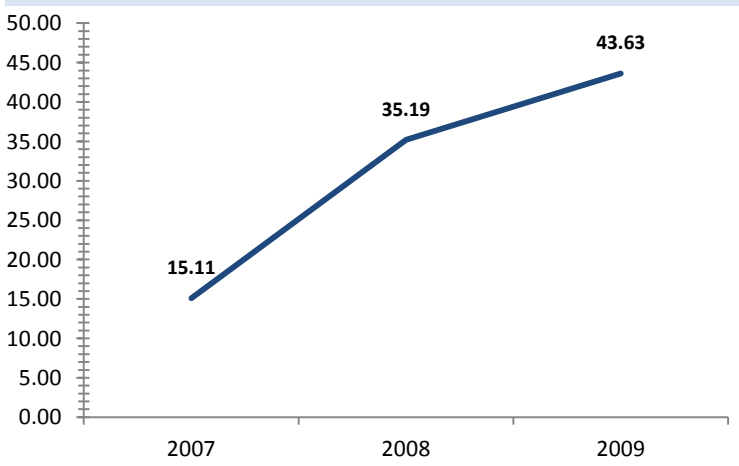
Source: Department of Education - Statistical Bulletin

## Net Enrolment Rate (Prep to Grade 8)



Source: Department of Education - Statistical Bulletin

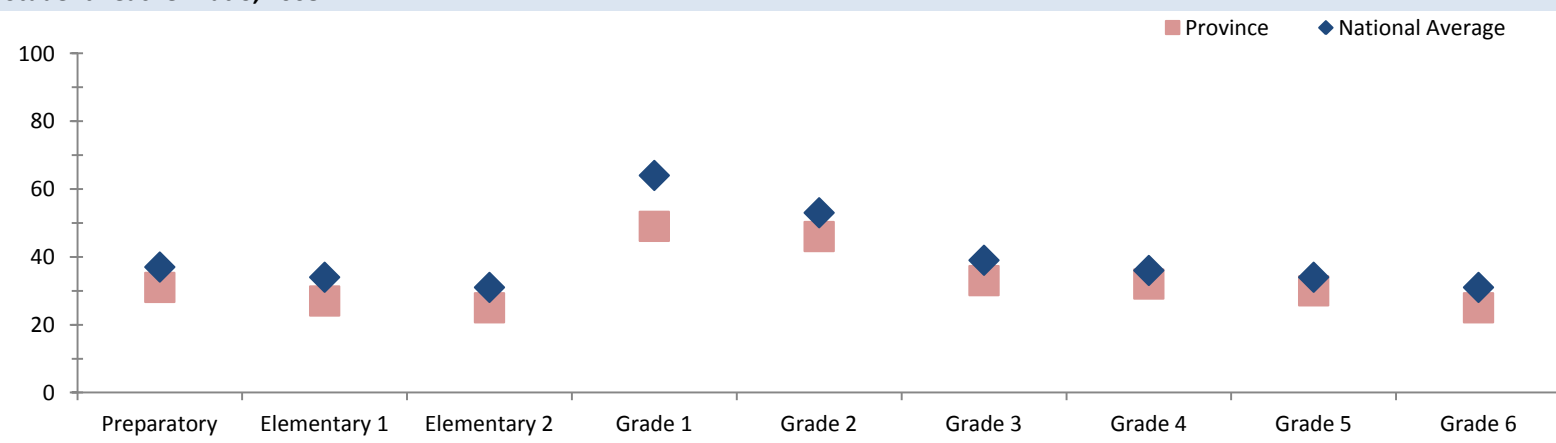
## Net Admission Rate



Source: Department of Education - Statistical Bulletin

## Quality Education

### Student Teacher Ratio, 2008



Source: Department of Education - Statistical Bulletin

# Central

## Education

Indicators	Male			Change	Female			Change	Total			Change
	2007	2008	2009	2007-2009	2007	2008	2009	2007-2009	2007	2008	2009	2007-2009
<b>Teachers (#)</b>												
Teachers preparatory	169	192	200	+31	82	109	110	+28	251	301	311	+60
Teachers elementary 1	143	175	168	+25	67	91	94	+27	211	266	262	+51
Teachers elementary 2	125	161	179	+54	82	79	77	-5	208	240	256	+48
Teachers grade 1	5	14	12	+7	4	11	5	+1	10	26	17	+7
Teachers grade 2	9	16	13	+4	4	3	4	0	13	19	17	+4
Teachers grade 3	86	90	90	+4	70	78	74	+4	156	169	164	+8
Teachers grade 4	85	80	85	0	69	79	73	+4	154	159	159	+5
Teachers grade 5	89	97	107	+18	66	57	59	-7	156	155	166	+10
Teachers grade 6	96	105	103	+7	60	62	67	+7	157	168	171	+14
Teachers grade 7/8	197	203	236	+39	115	111	108	-7	312	314	345	+33
<b>Students (#)</b>												
Students preparatory	4019	4970	5189	+1170	3648	4601	4900	+1252	7667	9571	10089	+2422
Students elementary 1	2960	3908	4188	+1228	2689	3438	3808	+1119	5649	7346	7997	+2348
Students elementary 2	2764	3232	4034	+1270	2433	2915	3672	+1239	5197	6147	7706	+2509
Students grade 1	244	779	645	+401	178	512	441	+263	422	1291	1086	+664
Students grade 2	300	555	635	+335	216	359	356	+140	516	914	991	+475
Students grade 3	2783	3025	3120	+337	2357	2638	2739	+382	5140	5663	5859	+719
Students grade 4	2684	2896	3048	+364	2250	2357	2490	+240	4934	5253	5538	+604
Students grade 5	2451	2566	2914	+463	1965	2148	2365	+400	4416	4714	5279	+863
Students grade 6	2217	2326	2521	+304	1789	1891	2054	+265	4006	4217	4575	+569
Students grade 7	1631	1916	2041	+410	1337	1505	1625	+288	2968	3421	3666	+698
Students grade 8	1492	1477	1791	+299	1137	1160	1329	+192	2629	2637	3120	+491
Students grade 9	1197	1028	1179	-18	869	662	828	-41	2066	1690	2007	-59
Students grade 10	885	831	1045	+160	601	607	604	+3	1486	1438	1649	+163
Students grade 11	683	500	489	-194	431	327	340	-91	1114	827	829	-285
Students grade 12	516	511	428	-88	289	358	245	-44	805	869	673	-132
<b>Schools (#)</b>												
Elementary schools									327	382	383	+56
Primary schools									208	220	227	+19
National high schools									1	1	1	0
Secondary schools									11	12	12	+1
Technical colleges									0	0	0	0
Vocational schools									4	3	4	0

Source: Department of Education - Statistical Bulletin